


Home Company Products Literature Documentation Distributors Contact



4-Series Gear Pumps

[Home](#) / [Gear Pumps](#) / [4-Series](#)

Liquiflo's **4-Series** pumps are low-flow **magnetically-driven** gear pumps. The 4-Series housings are manufactured from Bar Stock in **316 Stainless Steel, Alloy-C or Titanium**. With several material options for shafts, gears, wear plates and bearings, these pumps can be used in a wide variety of chemical processing applications.



Models 41, 43, 44 & 45 Mag-Drive Close-Coupled

Guide to Gear Pumps
An Introduction to Gear Pumps

 [Gear Pump Basics \(pdf\)](#)

 [Metering with Gear Pumps \(pdf\)](#)

Questions?
Contact us for your application needs

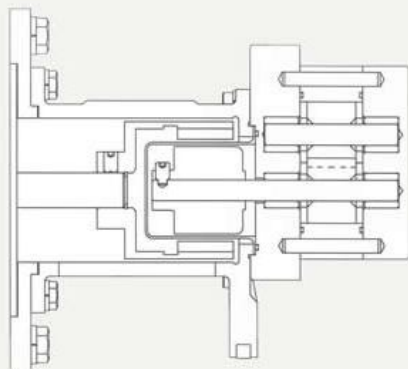
Special Requirements?
Liquiflo can custom engineer pumps to meet the specific requirements of your application

4-Series Specifications

Click any Model # below to access page for that individual model:

4-SERIES MODEL		41	43	44	45
Port Connections:	Threaded-NPT	in 1/4	in 1/4	in 3/8	in 3/8
	Threaded-BSPT	in 3/8	in 3/8	in 3/8	in 3/8
Max Flow Rate	GPM	0.5	1.4	2.4	3.4
Max Differential Pressure	PSI	100	100	100	100
Max Discharge Pressure	PSIG	300	300	300	300
Max Temperature	°F	500	500	500	500
Min Temperature	°F	-40	-40	-40	-40
Max Speed	RPM	1750	1750	1750	1750
NPSHR @ Max Speed	ft	4.5	3	3	2
Weight (without motor) Mag, Close-Coupled	lbs	11	11	13	13

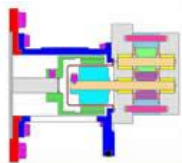
Available Materials Of Construction



Click any pump component below to view available materials:

- [Housings](#)
- [Cont. Can](#)
- [Gears](#)
- [Wear Plates](#)
- [Bearings](#)
- [Shafts](#)

Available Sealing Configurations



Magnetically Coupled (sealless)

The **magnetically coupled** or **mag-drive** pump is the best method for handling toxic, noxious, crystallizing, or most other hazardous liquids since it completely contains the pumpage by isolating the drive shaft inside the pump housing. With no dynamic seal to leak or replace, the maintenance issues associated with seal leakage are eliminated. All Liquiflo gear pumps are available with magnetic drive.

Available Options & Accessories



Repair Kits

Repair Kits simplify inventory and speed repair. All parts can also be purchased separately.



Relief Valves

Positive displacement pumps should be installed with a relief valve in the discharge line to protect the pump and piping against any type of line blockage including the inadvertent closing of an isolation valve. Liquiflo manufactures two sizes of relief valves in both 316 SS and Alloy-C.



Base Plate Mounting

4-Series pumps can be base-mounted when close-coupled to a motor.



Hard-Coated Shafts

Hard-coated shafts are used to extend pump life in difficult applications requiring higher levels of wear resistance. Ceramic Chrome Oxide (CO), Tungsten Carbide (TC) and Titanium Oxide (TO) coatings are available.

[Home](#) / [Gear Pumps](#) / [4-Series](#)



OFFICIAL DISTRIBUTORS FOR:

**VIKING
PUMP**

A Unit of IDEX Corporation

Viking Gear Pumps

Liquiflo 

Liquiflo Gear Pumps



FINISH THOMPSON INC.

Finish Thompson Drum & Centrifugal Pumps



Codip Air Operated PTFE Diaphragm Pumps

MICROPUMP

Micropump Gear Pumps

HNP M

HNP Mikrosysteme

HNP Gear Pumps

WANNER
Hydra-Cell
Seal-less Pump Technology

Hydra-Cell High Pressure Diaphragm Pumps



M Pumps, Centrifugal,
Turbine and Vane Pumps

ISMATEC

Ismatec Peristaltic Pumps

 **FLUID** METERING, INC.

Fluid Metering Piston Pumps

