



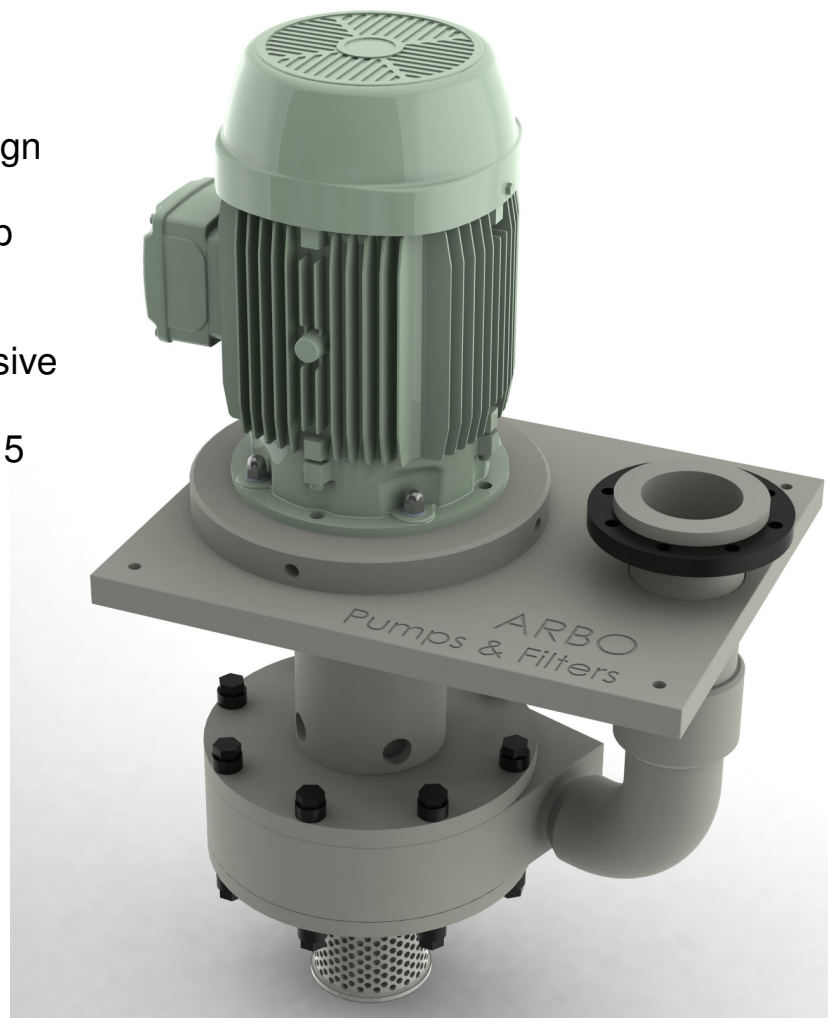
ARBO

"BORN TO RESIST CORROSION"

CORROSION RESISTANT "SEAL-LESS" IMMERSIBLE PUMPS

"Extra Heavy Duty"

- ⊕ All wetted parts made massive blocks of corrosion resistant plastic PP or PVDF.
- ⊕ Close coupled – compact design
- ⊕ No seal or bearing in the pump housing;
 - pump can be run dry
 - pump can handle any abrasive or crystallizing liquid
 - pump allows particles till \varnothing 5 mm in suspension.
- ⊕ Suction pipes up to a maximum of 3 meters.
- ⊕ Low operational costs and maintenance friendly.
- ⊕ Flow rates to 250 m³/h.
- ⊕ Delivery heads up to 26 M
- ⊕ For any application where metal pumps are affected by corrosion.



MODEL EHD

20100101EN/1

Design

These **Extra Heavy Duty** pumps are particularly suited for pumping a high liquid volume at relatively low delivery heads and are therefore excellent as circulation pump for fume scrubbers and/or spraying applications. The pumps have no mechanical seal or bearing in the liquid and are designed to operate with a **liquid seal**. Thanks to this, the pumps are not harmed by **dry running or abrasive liquid**. Besides this, the clearances in the pump housing are large enough to allow liquid with solids up to \varnothing 5 mm without wear.

In standard execution, the pump is **close-coupled** and the pump shaft is an extended motor shaft from 1 piece without flexible coupling. This reduces the number of wear parts to a minimum. For easy servicing a lifting bar is standard.

The minimum starting level is 310 mm below the mounting plate.

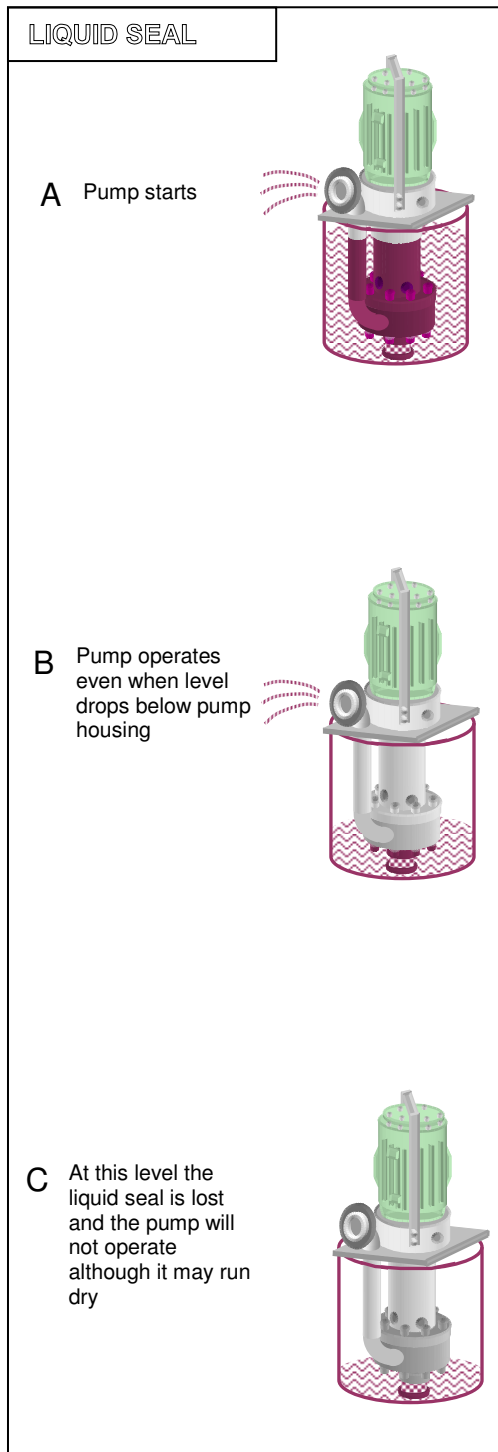
The discharge connection is a **PN 10 flange** according to DIN/ISO. Other drillings are available.

Materials

All wetted parts are made of **PP or PVDF from solid blocks**. Therefore there is no possibility of stress cracking as so often occurs with molded pumps.

Maximum operating temperatures:

- PP : 80 °C
- PVDF : 120 °C



The SS-316 pump shaft is **fully sleeved** with plastic ensuring **no metal to liquid contact**. The shaft sleeve is welded to the impeller so that the amount of gaskets is minimized. Gaskets are available in Viton (standard), EPDM, or Viton/PTFE.

Motors

Standard IEC, 4-pole motors with voltage 400/690 V/ 3 Ph/ 50 or 60 Cy with protection class IP55, insulation class F and rain cover. The motors are protected against bad fumes by a **labyrinth seal** and are epoxy resin paint coated.

Impellers

ARBO immersible pumps are particularly suited for very dirty liquids. For that reason they are provided with semi-open impellers which are fixed independently from the direction of rotation. The special TS-impeller shape creates, when running, a "liquid seal" around the impeller and the shaft (see operation A-B-C)

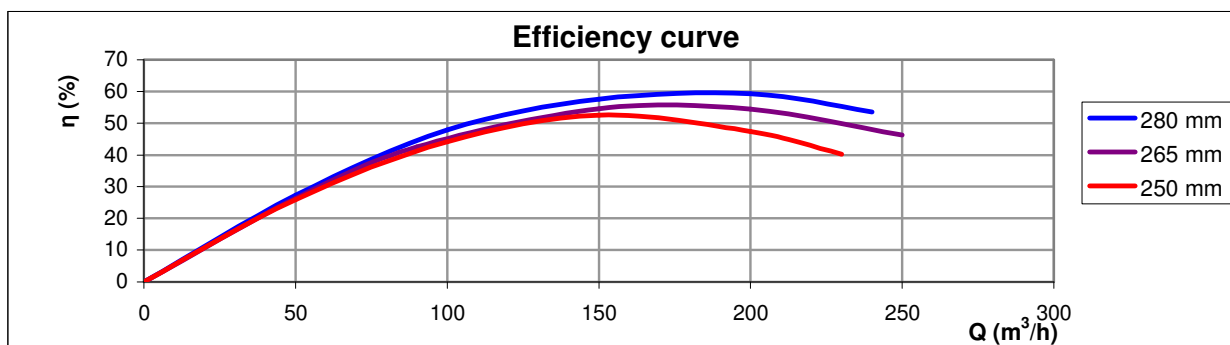
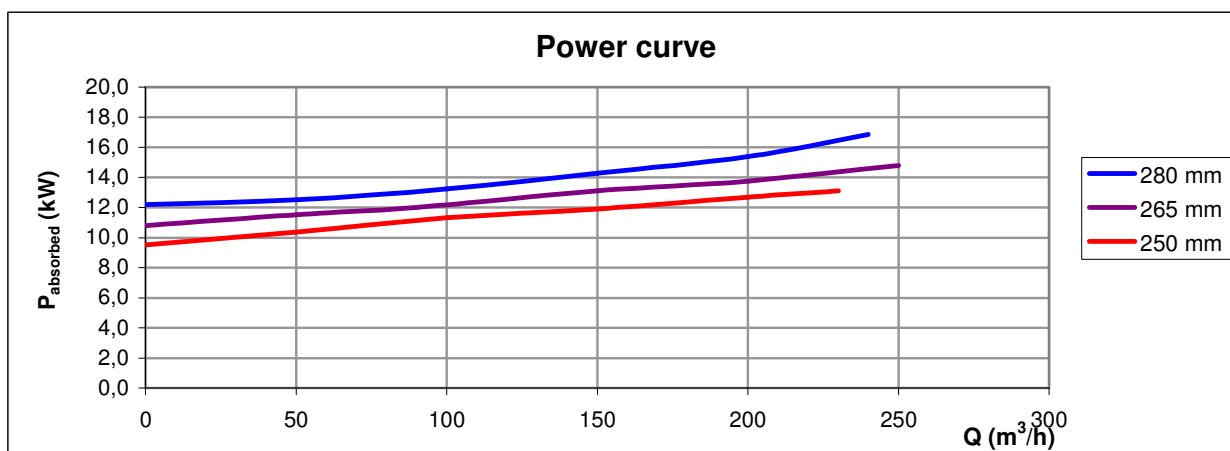
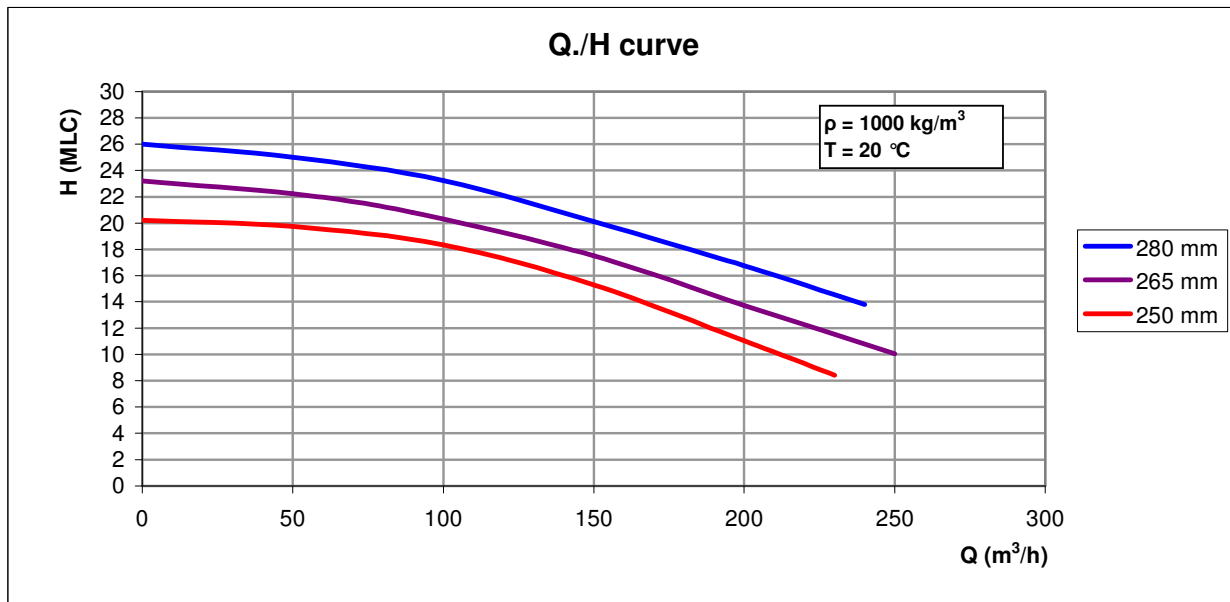
Options

- Level controllers for automatic operation.
- Motors with special voltages, insulation classes or explosion proof
- Model BB for installation "out-of-tank"

PERFORMANCE CURVES

ARBO Seal-less immersible pumps model HD

type 125-250





OFFICIAL DISTRIBUTORS FOR:

**VIKING
PUMP**

A Unit of IDEX Corporation

Viking Gear Pumps

Liquiflo 

Liquiflo Gear Pumps



FINISH THOMPSON INC.

Finish Thompson Drum & Centrifugal Pumps



Codip Air Operated PTFE Diaphragm Pumps

MICROPUMP

Micropump Gear Pumps

HNP M

HNP Mikrosysteme

HNP Gear Pumps

WANNER
Hydra-Cell
Seal-less Pump Technology

Hydra-Cell High Pressure Diaphragm Pumps



M Pumps, Centrifugal,
Turbine and Vane Pumps

ISMATEC

Ismatec Peristaltic Pumps

 **FLUID** METERING, INC.

Fluid Metering Piston Pumps

