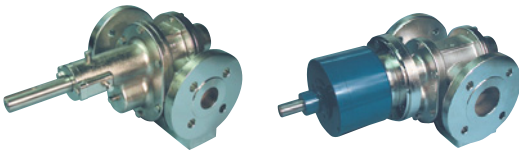


312F SEALED 312F-MC MAG-DRIVE



**3 - SERIES
ROTOGEAR®
GEAR PUMP**

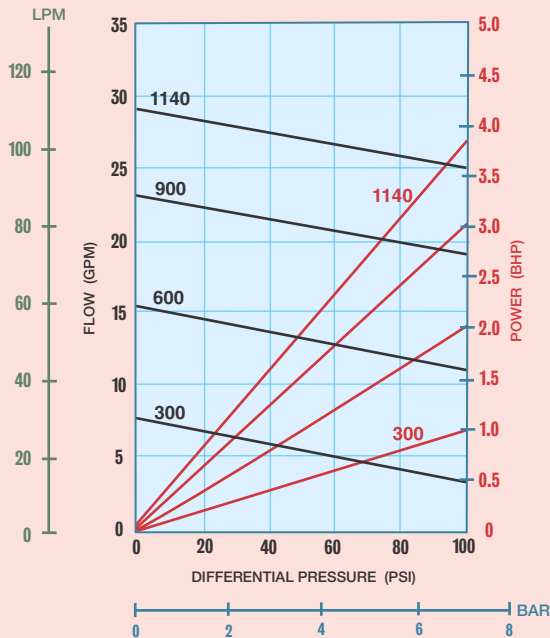


Sealed

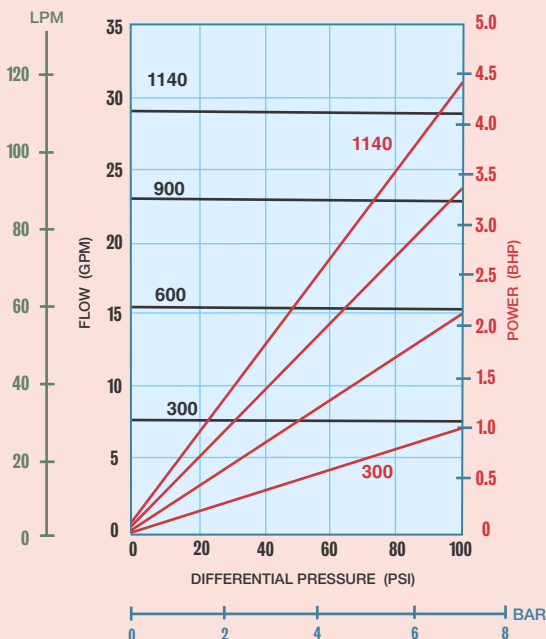
Mag-Drive

PERFORMANCE CURVES

1 CPS Fluid (Water)



100 CPS Fluid (Oil)

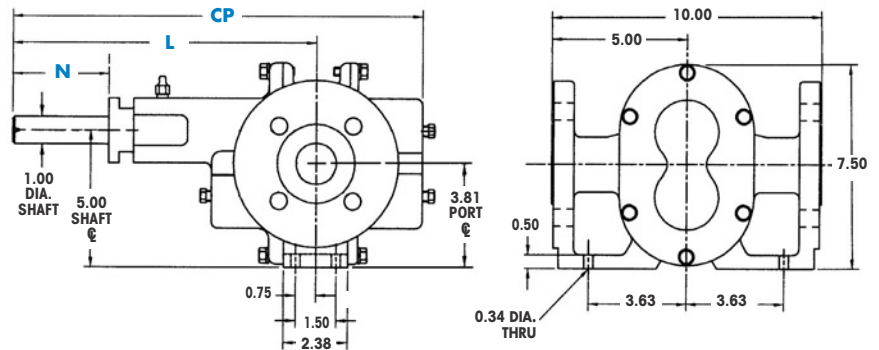


PORT SIZE	1 1/2" FLG or 1 1/4" NPT/BPST
MAX FLOW	29 GPM; 110 LPM
MAX DIFFERENTIAL PRESSURE	100 PSI; 7 BAR
MAX DISCHARGE PRESSURE	270 PSI; 18.6 BAR
MAX TEMPERATURE	500°F; 260°C
MIN TEMPERATURE	-40°F; -40°C
MAX VISCOSITY	100,000* CPS
NPSHR @ 1150 RPM	5 FT; 1.5 M
LIFT (DRY)	17 FT; 5.2 M
WEIGHT (without motor)	
SEALED	52 LBS; 23.6 KGS
MAG-DRIVE	70 LBS; 31.8 KGS

* Higher viscosities possible. Contact factory.

Dimensional Data (inches)

312F Sealed (Long-coupled only)



SEAL CONFIGURATIONS

DIMENSION	SEAL CONFIGURATIONS	
	SINGLE MECHANICAL SEAL DOUBLE MECHANICAL SEAL	PACKING
CP(1)	15.19	15.19
N	3.75 (2)	3.69
L	11.25	11.25

NOTES: (1) Add .312 inches for Bearing Flush Plug.
(2) Minimum dimension.

Dimensional Data (inches)

312F-MC Mag-Drive (Long-coupled only)

