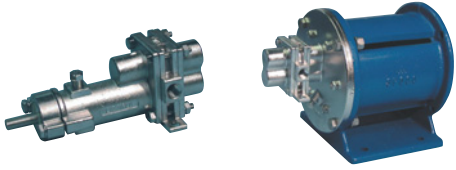


H3F SEALED H3F-MC MAG-DRIVE



**H - SERIES
ROTOGEAR®
GEAR PUMP**

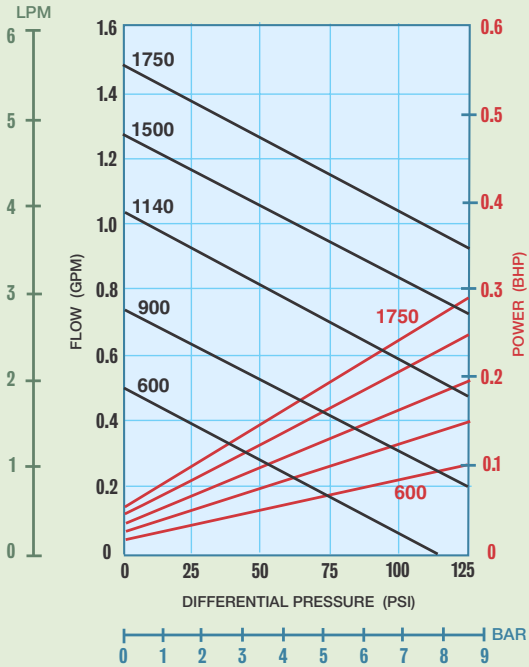


Sealed

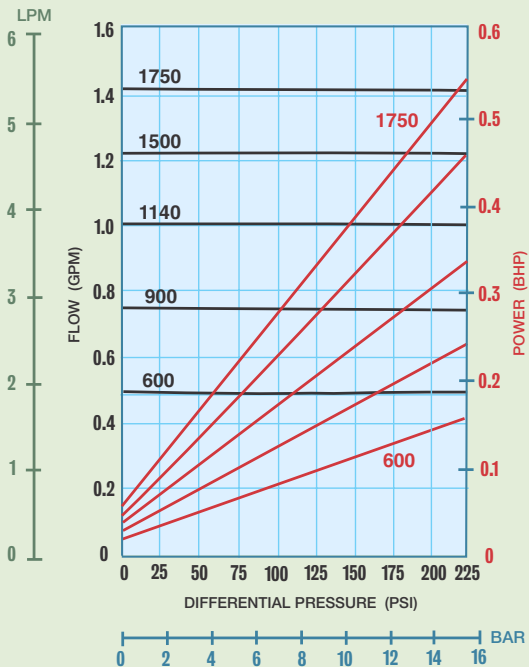
Close Coupled:
Sealed or Mag-Drive

PERFORMANCE CURVES

1 CPS Fluid (Water)



100 CPS Fluid (Oil)

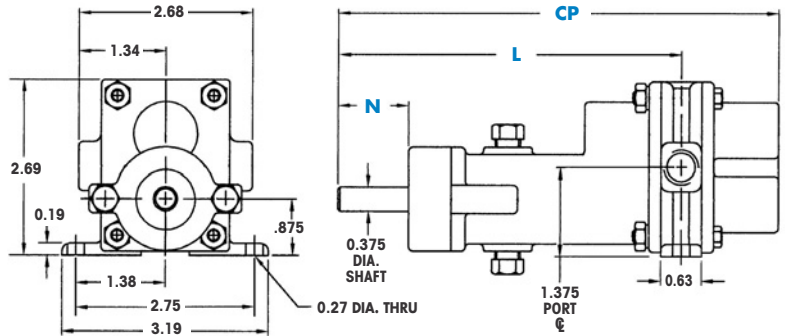


PORT SIZE	1/4" NPT/BSPT or 1/2" FLG
MAX FLOW	1.4 GPM; 5.3 LPM
MAX DIFFERENTIAL PRESSURE	225 PSI; 15.5 BAR
MAX DISCHARGE PRESSURE	300 PSI; 20.7 BAR
MAX TEMPERATURE	500°F; 260°C
MIN TEMPERATURE	-40°F; -40°C
MAX VISCOSITY	100,000* CPS
NPSHR @ 1750 RPM	2 FT; 0.6 M
LIFT (DRY)	1.5 FT; 0.45 M
WEIGHT (without motor)	
SEALED	2.5 LBS; 1.1 KGS
MAG-DRIVE	31 LBS; 14 KGS

* Higher viscosities possible. Contact factory.

Dimensional Data (inches)

Long-Coupled: H3F Sealed



DIMENSION	SEAL CONFIGURATIONS	
	PACKING	DOUBLE MECHANICAL SEAL
CP(1)	6.94	
N	0.81 (2)	
L	5.44	

NOTES: (1) Add .312 inches for Bearing Flush Plug.
(2) Minimum dimension.

Dimensional Data (inches)

Close-Coupled: H3F-MC & H3F Sealed

