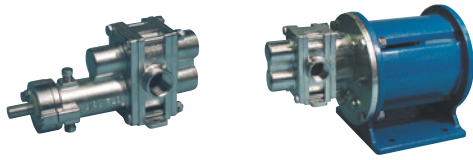


# H7F SEALED H7F-MC MAG-DRIVE



**H - S E R I E S  
R O T O G E A R ®  
G E A R P U M P**

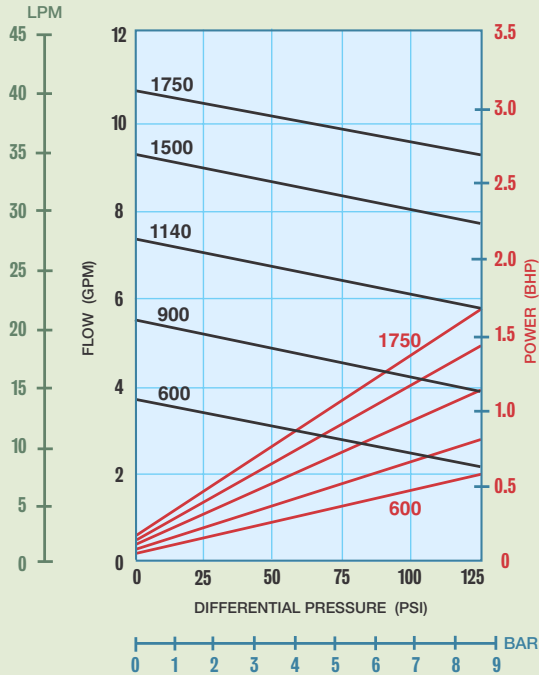


Sealed

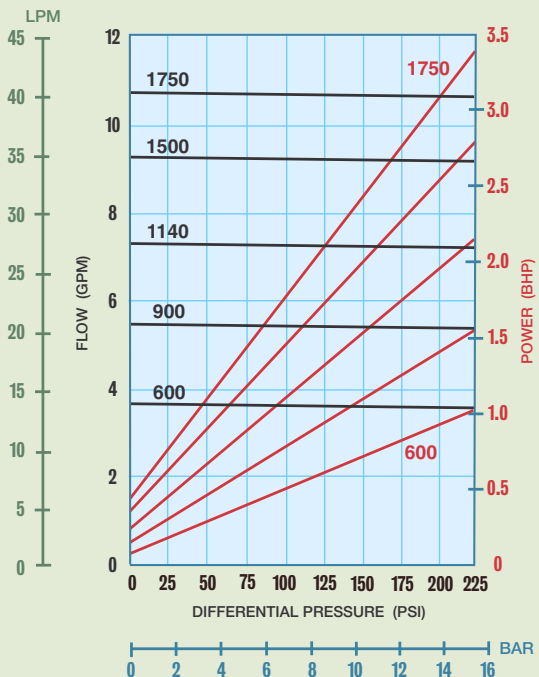
Close Coupled:  
Sealed or Mag-Drive

## PERFORMANCE CURVES

1 CPS Fluid (Water)



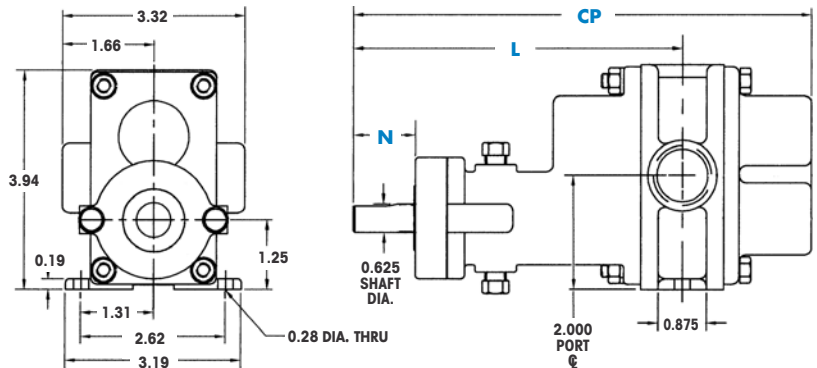
100 CPS Fluid (Oil)



<b>PORT SIZE</b>	<b>3/4" NPT/BSPT/FLG</b>
<b>MAX FLOW</b>	<b>10.7 GPM; 40.5 LPM</b>
<b>MAX DIFFERENTIAL PRESSURE</b>	<b>225 PSI; 15.5 BAR</b>
<b>MAX DISCHARGE PRESSURE</b>	<b>225 PSI; 15.5 BAR</b>
<b>MAX TEMPERATURE</b>	<b>500°F; 260°C</b>
<b>MIN TEMPERATURE</b>	<b>-40°F; -40°C</b>
<b>MAX VISCOSITY</b>	<b>100,000* CPS</b>
<b>NPSHR @ 1750 RPM</b>	<b>5.2 FT; 1.6 M</b>
<b>LIFT (DRY)</b>	<b>7 FT; 2.1 M</b>
<b>WEIGHT (without motor)</b>	
<b>SEALED</b>	<b>6.5 LBS; 3 KGS</b>
<b>MAG-DRIVE</b>	<b>36 LBS; 16 KGS</b>

\* Higher viscosities possible. Contact factory.

Dimensional Data (inches)



Long-Coupled: H7F Sealed

DIMENSION	SEAL CONFIGURATIONS	
	PACKING	DOUBLE MECHANICAL SEAL
CP <sup>(1)</sup>	8.32	8.32
N	0.94 <sup>(2)</sup>	0.94 <sup>(2)</sup>
L	5.98	5.98

NOTES: (1) Add .312 inches for Bearing Flush Plug.  
(2) Minimum dimension.

Dimensional Data (inches)

Close-Coupled: H7F-MC & H7F Sealed

