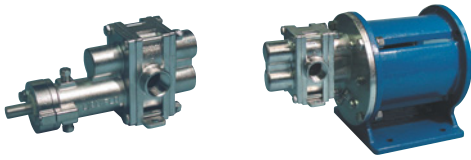


# H7N SEALED H7N-MC MAG-DRIVE



**H - SERIES  
ROTOGEAR®  
GEAR PUMP**

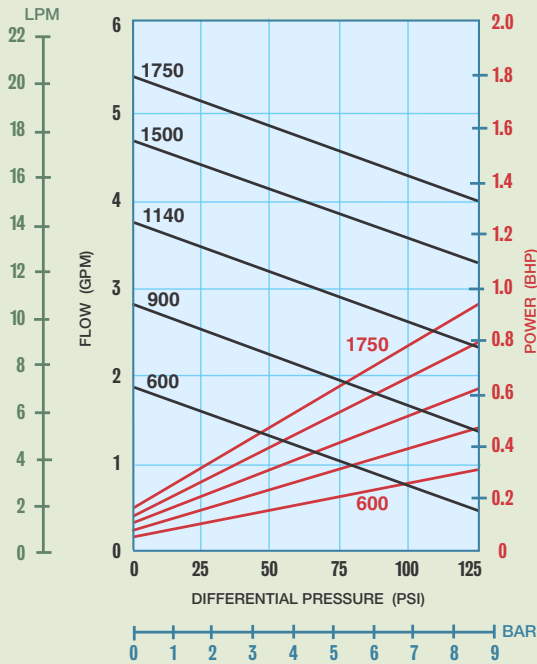


Sealed

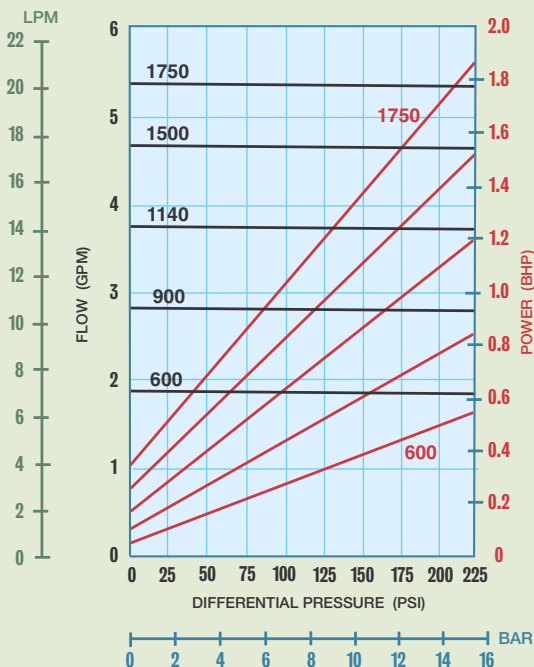
Close Coupled:  
Sealed or Mag-Drive

## PERFORMANCE CURVES

1 CPS Fluid (Water)



100 CPS Fluid (Oil)



**PORT SIZE** 3/4" NPT/BSPT/FLG

**MAX FLOW** 5.4 GPM; 20.4 LPM

**MAX DIFFERENTIAL PRESSURE** 225 PSI; 15.5 BAR

**MAX DISCHARGE PRESSURE** 225 PSI; 15.5 BAR

**MAX TEMPERATURE** 500°F; 260°C

**MIN TEMPERATURE** -40°F; -40°C

**MAX VISCOSITY** 100,000\* CPS

**NPSHR @ 1750 RPM** 5.2 FT; 1.6 M

**LIFT (DRY)** 6 FT; 1.8 M

**WEIGHT (without motor)**

**SEALED**

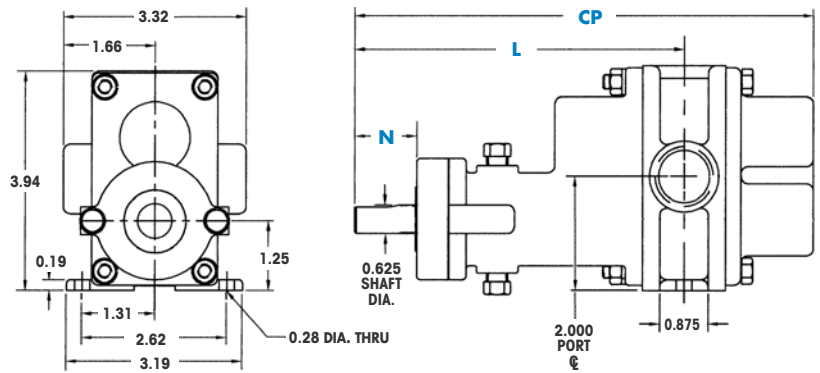
6.5 LBS; 3 KGS

**MAG-DRIVE**

36 LBS; 16 KGS

\* Higher viscosities possible. Contact factory.

Dimensional Data (inches)



Long-Coupled: H7N Sealed

SEAL CONFIGURATIONS

DIMENSION	PACKING CONFIGURATIONS		
	PACKING	SINGLE MECHANICAL SEAL	DOUBLE MECHANICAL SEAL
CP(1)		8.20	
N		0.94 (2)	
L		5.98	

NOTES: (1) Add .312 inches for Bearing Flush Plug.  
(2) Minimum dimension.

Dimensional Data (inches)

Close-Coupled: H7N-MC & H7N Sealed

