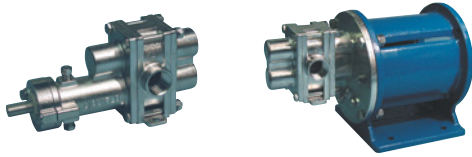


H7R SEALED H7R-MC MAG-DRIVE



**H - SERIES
ROTOGEAR®
GEAR PUMP**

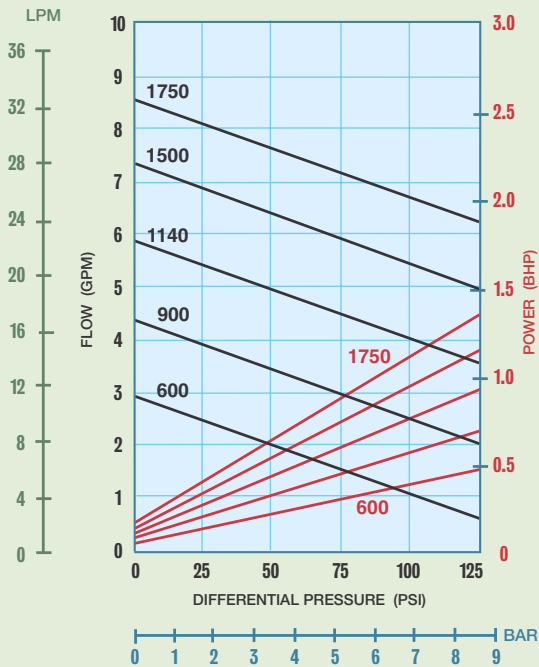


Sealed

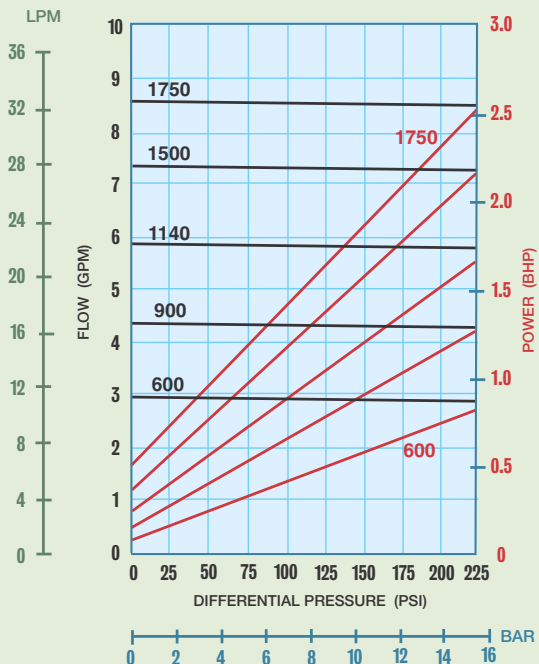
Close Coupled:
Sealed or Mag-Drive

PERFORMANCE CURVES

1 CPS Fluid (Water)



100 CPS Fluid (Oil)

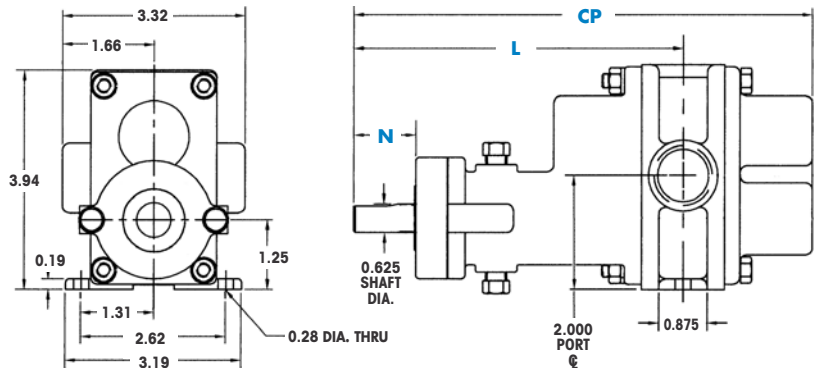


PORT SIZE	3/4" NPT/BSPT/FLG
MAX FLOW	8.6 GPM; 32.5 LPM
MAX DIFFERENTIAL PRESSURE	225 PSI; 15.5 BAR
MAX DISCHARGE PRESSURE	225 PSI; 15.5 BAR
MAX TEMPERATURE	500°F; 260°C
MIN TEMPERATURE	-40°F; -40°C
MAX VISCOSITY	100,000* CPS
NPSHR @ 1750 RPM	5.2 FT; 1.6 M
LIFT (DRY)	6 FT; 1.8 M
WEIGHT (without motor)	
SEALED	6.5 LBS; 3 KGS
MAG-DRIVE	36 LBS; 16 KGS

* Higher viscosities possible. Contact factory.

Dimensional Data (inches)

Long-Coupled: H7R Sealed



DIMENSION	SEAL CONFIGURATIONS	
	PACKING	DOUBLE MECHANICAL SEAL
CP⁽¹⁾		8.20
N		0.94⁽²⁾
L		5.98

NOTES: (1) Add .312 inches for Bearing Flush Plug.
(2) Minimum dimension.

Dimensional Data (inches)

Close-Coupled: H7R-MC & H7R Sealed

