

P600 Pump Series

Capacities to 2634.0 LPH - Rated to 70 Bar

Electronic Precision Metering

- Designed to handle a wide range of fluids from clear water to thick slurries
- Electronic flow control increases accuracy and reliability
- Multiple diaphragm design provides linear, virtually pulse-less flow
- Smaller footprint saves valuable space
- One pump covers a wide range of flows and pressures - reducing inventory requirements with fast, simple field conversion
- Duplexing option doubles capacity and equipment savings
- Hydraulically-actuated, balanced diaphragms provide superior performance across entire pressure range
- Rugged construction with a variety of affordable choices for liquid end, diaphragm and check valve materials



Hydra-Cell Metering Solutions meet or exceed API 675 performance standards for Steady-State Accuracy ($\pm 1\%$), Linearity ($\pm 3\%$), and Repeatability ($\pm 3\%$).

Performance*

LPH Maximum Flow at Designated Pressure

| LPH All Pumps | | LPH Metallic Pump Heads Only | | Pump RPM | Gear Ratio | Motor RPM |
|---------------|--------|------------------------------|--------|----------|------------|-----------|
| 7 Bar | 17 Bar | 35 Bar | 70 Bar | | | |
| 68.14 | 68.04 | 66.92 | 63.09 | 14.5 | 100:1 | |
| 85.53 | 84.90 | 83.47 | 79.20 | 18.13 | 80:1 | |
| 113.9 | 113.0 | 111.0 | 106.0 | 24.17 | 60:1 | |
| 136.7 | 135.4 | 133.0 | 127.4 | 29 | 50:1 | |
| 170.8 | 169.0 | 166.1 | 159.6 | 36.25 | 40:1 | |
| 227.6 | 225.1 | 221.1 | 213.2 | 48.33 | 30:1 | 1450 |
| 273.0 | 270.0 | 265.2 | 256.1 | 58 | 25:1 | |
| 341.2 | 337.4 | 331.3 | 320.5 | 72.5 | 20:1 | |
| 454.9 | 449.6 | 441.4 | 427.7 | 96.67 | 15:1 | |
| 682.2 | 674.0 | 661.7 | 642.2 | 145 | 10:1 | |
| 909.5 | 898.4 | 882.0 | 856.7 | 193.33 | 7.5:1 | |
| 1364.1 | 1347.3 | 1322.6 | 1285.7 | 290 | 5:1 | |
| 1755.9 | 1734.1 | 1702.2 | 1655.3 | 373.3 | 7.5:1 | 2800 |
| 2634.0 | 2601.0 | 2553.1 | 2483.8 | 560 | 5:1 | |

* Capacity data is shown for pumps with elastomeric diaphragms. Consult factory for performance characteristics of pumps with PTFE diaphragms.

Required Motor kW

| | | | | |
|------|------|------|------|-----|
| 0.18 | 0.37 | 0.55 | 0.75 | 1.1 |
| 1.5 | 2.2 | 3.7 | 5.5 | 7.5 |

P600 Pump Series

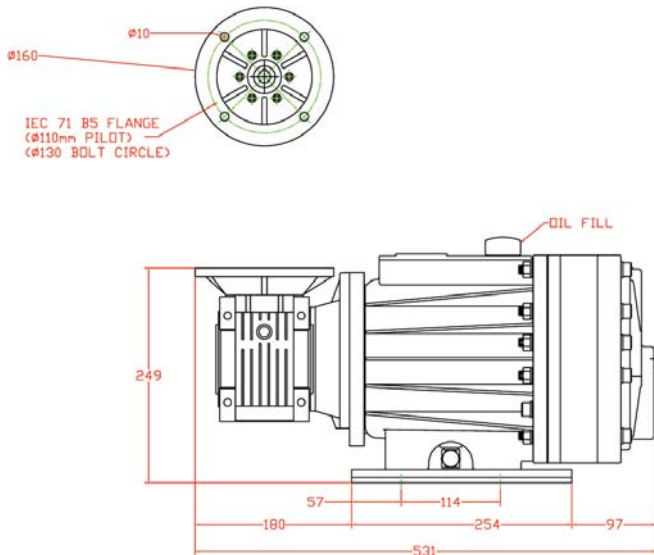
Pump Data

| | |
|----------------------------|-----------------------------------------------------------------|
| Diaphragms per Liquid End | 3 |
| Flow Control | Electronic variable speed drive |
| Maximum Discharge Pressure | |
| Metallic Head: | 70 bar (1000 PSI) |
| Non-Metallic Head: | Polypropylene- 17 bar (250 PSI) Kynar- 24 bar (350 PSI) |
| Maximum Suction Pressure | 17 bar (250 PSI) |
| Maximum Temperature | |
| Metallic Head: | 121°C (250°F)* |
| Non-Metallic Head: | 60°C (140°F) |
| Suction Port | 1-1/2 inch BSPT or NPT |
| Discharge Port | 1 inch BSPT or NPT |
| Weight (less motor) | |
| Metallic Head: | 64 kg (141 lbs) |
| Non-Metallic Head: | 48 kg (106 lbs) |
| Dimensions (less motor)** | |
| Metallic Head: | 533 mm W x 272 mm D x 285 mm H (21.0" W x 10.7" D x 11.2" H) |
| Non-Metallic Head: | 554 mm W x 272 mm D x 285 mm H (21.8" W x 10.7" D x 11.2" H) |

* Consult factory for correct component selection for fluid temperatures above 71°C (160°F).

** For 71 B5 motor frame only. Consult factory for other motor frame sizes.

Representative Dimensional Drawings (in mm)



Hydra-Cell Metering Solutions pump systems are available with back pressure and relief valves, calibration cylinders, pulsation dampeners, manifolds and flanges, suction accumulators, custom controllers, strainers, a variety of actuating oils, witnessed and non-witnessed testing, drawing packages, and OEM paint and nameplate customization.

For information on the complete line of Hydra-Cell Metering Solutions pumps, contact us today.

Wanner International Ltd.

Units 8 & 9, Fleet Business Park
Sandy Lane
Church Crookham, Hampshire GU52 8BF, England
Tel: +(44) 01252 816847
FAX Tel: +(44) 01252 629242
Email: sales@wannerint.com
www.WannerInt.com

Printed in USA P600-DS-I-04.07

Wanner Pumps Ltd.

Room 1111, 11/F New Kowloon Plaza
38 Tai Kak Tsui Road
Tai Kak Tsui, Kowloon, HONG KONG
Tel: (852) 3428 6534
FAX Tel: (852) 3188 9145
Email: jlou@wannereng.com

Wanner Engineering, Inc.

1204 Chestnut Avenue
Minneapolis, MN 55403 USA
Tel: 612-332-5681
FAX Tel: 612-332-6937
Toll-Free Fax (USA): 800-332-6812
Email: sales@wannereng.com
www.Hydra-Cell.com/metering

Pump Ordering Information

A complete pump order number contains 13 digits based on the specified pump materials listed below. Contact your Hydra-Cell sales representative for accompanying motor drive options.

| | | | | | | | | | | | | |
|---|---|---|---|---|---|---|---|---|----|----|----|----|
| 1 | 2 | 3 | 4 | 5 | 6 | 7 | 8 | 9 | 10 | 11 | 12 | 13 |
| P | 6 | 0 | 0 | | | | | | | | | |

Pump Model Size (Digits 1-4)

P600 For all P600 Pumps

Pump Version (Digit 5)

M BSPT Ports
N NPT Ports

Pump Head Material (Digit 6)

C Cast Iron
M Kynar®
P Polypropylene
S 316 Stainless Steel
T Hastelloy®C

Diaphragm & O-ring Material (Digit 7)

E EPDM
G Viton®-XT
J PTFE
P Neoprene
T Buna-N-XS

Check Valve Material (Digits 8-9) (Valve Spring / Valve & Seat)

SS 316 SST / 316 SST
TT Hastelloy®C / Hastelloy®C
SC 316 SST / Ceramic
TC Hastelloy®C / Ceramic

Gearbox Ratio (Digits 10-12)

| | | | |
|-------------|-------|-----------------------|----------|
| A00 | 100:l | (71 B5 Motor Frame) | |
| H00* | 100:l | (71 B5 Motor Frame) | > 35 bar |
| A80 | 80:l | (71 B5 Motor Frame) | |
| H80* | 80:l | (71 B5 Motor Frame) | > 35 bar |
| A60 | 60:l | (71 B5 Motor Frame) | |
| H60* | 60:l | (80 B5 Motor Frame) | |
| A50 | 50:l | (71 B5 Motor Frame) | |
| B50 | 50:l | (80 B5 Motor Frame) | |
| A40 | 40:l | (71 B5 Motor Frame) | |
| B40 | 40:l | (80 B5 Motor Frame) | |
| B30 | 30:l | (80 B5 Motor Frame) | |
| B25 | 25:l | (80 B5 Motor Frame) | |
| C25 | 25:l | (90 B5 Motor Frame) | |
| B20 | 20:l | (80 B5 Motor Frame) | |
| C20 | 20:l | (90 B5 Motor Frame) | |
| B15 | 15:l | (80 B5 Motor Frame) | |
| C15 | 15:l | (90 B5 Motor Frame) | |
| B10 | 10:l | (80 B5 Motor Frame) | |
| C10 | 10:l | (90 B5 Motor Frame) | |
| H10* | 10:l | (100 B5 Motor Frame) | |
| B07 | 7.5:l | (80 B5 Motor Frame) | |
| C07 | 7.5:l | (90 B5 Motor Frame) | |
| H07* | 7.5:l | (112 B14 Motor Frame) | |
| G07 | 7.5:l | (132 B14 Motor Frame) | |
| B05* | 5:l | (80 B5 Motor Frame) | |
| C05* | 5:l | (90 B5 Motor Frame) | |
| D05* | 5:l | (100 B5 Motor Frame) | |
| E05* | 5:l | (112 B14 Motor Frame) | |
| G05 | 5:l | (132 B14 Motor Frame) | |

Base Plate (Digit 13)

C Carbon Steel (Epoxy painted)
G Carbon Steel (Epoxy painted) for all G reducers
H Carbon Steel (Epoxy painted) for all reducers with *