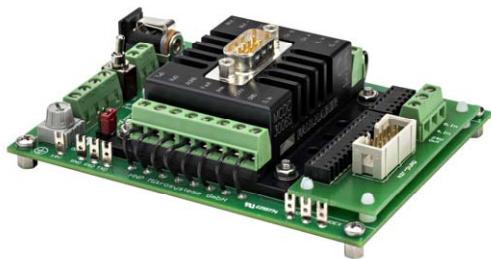


Low pressure series, Modular series

Programmable controller S-ND

For discrete dosage and continuous delivery



- High quality pump controller for continuous and discrete delivery
- Powerful 16-bit microcontroller
- Programming of controller
- Windows®-based software »Motion Manager«
- Potentiometer for speed set
- Analog input 0-10 V
- 3 digital inputs, 1 input is equipped with a switch
- 1 digital output, optionally programmable as input
- Two colored LED status indicator
- EEPROM memory
- RS-232 interface

The controller S-ND is recommended for programmable, precise control of discrete dosage and continuous delivery tasks in combination with pumps mzs-2521, mzs-2921, mzs-4622, mzs-2542 and mzs-2942.

The 16-bit microcontroller allows speed and position control for highly accurate dosage. The compact design on a PCB enables flexible installation. Process control link can be established via a RS-232 interface. Motor speed or

flow rate can be set either by an analog input (0-10 V) or a potentiometer mounted on the PCB. There are three digital inputs, one of them is equipped with a switch. Programs for dosage can be saved in the memory.

Technical data

| | |
|--------------------------|--|
| Control | PI-controller, speed and position control |
| Supply voltage U_B | 24 V DC (12 – 30 V) |
| Speed | 1 – 6000 rpm |
| Power | DIN 45323 socket, screw terminal |
| Pump connector | pin headers, 10-pole |
| Serial interface | RS-232, SUB-D plug, 9-pole |
| Input # 1 (speed) | 0 – 10 V |
| Fault output (input # 2) | Open collector max. U_B / 30 mA no error: connected to GND as input: low 0...0.5 V / high 4 V... U_B |
| Digital inputs # 3, 4, 5 | low 0...0.5 V / high 4...30 V input # 3 with switch |
| Program memory | 6600 Bytes |
| Protective class | IP 20 |
| Dimensions (L x W x H) | approx. 112 x 84 x 36 mm |
| Weight | approx. 170 g |

Subject to technical changes.

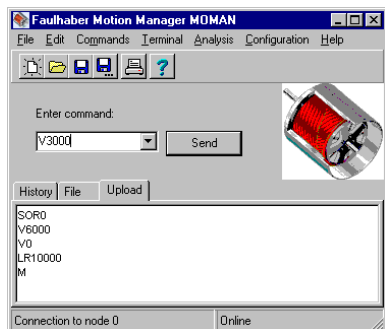
Contact

HNP Mikrosysteme GmbH
Bleicherufer 25 · D-19053 Schwerin

phone +49 385 52190-301
fax +49 385 52190-333

e-mail info@hnp-mikrosysteme.de
<http://www.hnp-mikrosysteme.de>

Software



All motor parameters for pump control can be set and saved with the software »Motion Manager« operating under Windows®. The program language is ASCII-based. Dosage programs can easily be typed on a computer and transferred to the EEPROM.

Several sample programs are supplied such as the triggering of different dosage programs with the internal PCB switches.

Configuration

```
SOR 0 ;RS-232
SOR 1 ;potentiometer
      ;or 0-10 V
```

Set interface

```
V3000 ;speed 3000 rpm
V0    ;stop
```

Flow rate set via speed control

```
LR640 ;load 10 revolutions
M     ;start positioning
```

Dosage

```
SP6000 ;set maximum speed
AC500  ;set acceleration
LPC400 ;load peak current
LCC200 ;load cont. current
```

Set motor parameters

```
GV     ;get command velocity
=> 3000
GN     ;get actual velocity
=> 2998
GRC    ;get actual current
=> 200
POS    ;get actual position
=> 640
```

Retrieve parameters and motor data

```
EEPSAV ;save configuration
```

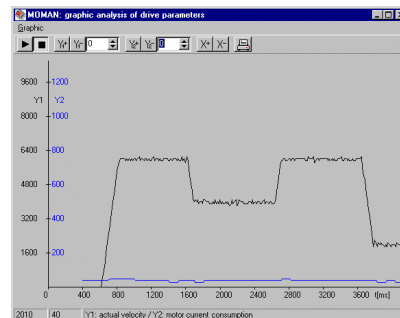
Save parameters to EEPROM

Programming

```
PROGSEQ ;start program
A1      ;label 1
V1000  ;speed 1000 rpm
DELAY 100 ;wait 1 sec
NP     ;notify position
LR 6400 ;load 10 revolutions
M     ;start motion
JMP1   ;jump to label 1
END    ;end program
```

Dosage program

Graphic online analysis



Sample chart: speed and motor current

Mode of operation

```
CONTMOD standard mode
APCMOD  analog position
         control mode
STEPMOD stepper motor mode
```

Selection of control mode

Item number

66 02 01 01

controller S-ND for pumps mzs-2521/ mzs-2921 / mzs-4622 and mzs-2542 / mzs-2942 null-modem cable, software »Motion Manager«, sample programs

Accessories

Power supply

external power supply 24 V DC, input voltage 100–240 V AC 50/60 Hz, with connector for controller S-ND

Multiplexer module

simultaneous operation of up to 255 pumps with a single RS-232 interface

OFFICIAL UK DISTRIBUTOR:
michael smith engineers limited
www.michael-smith-engineers.co.uk
freephone: 0800 316 7891