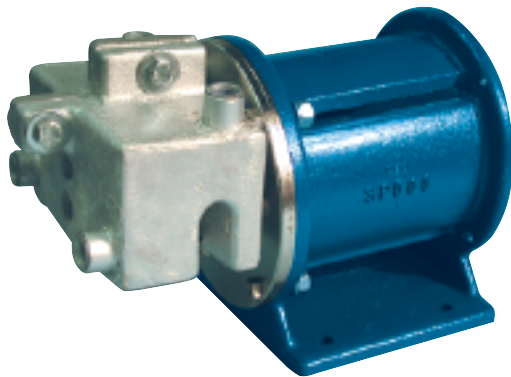


# Don't Lose Your Cool or Your Heat

## Liquiflo Temperature Control Jackets & Double Wall Containment Cans Control Pump Temperature

**Available for 3 & H-Series Gear Pumps**

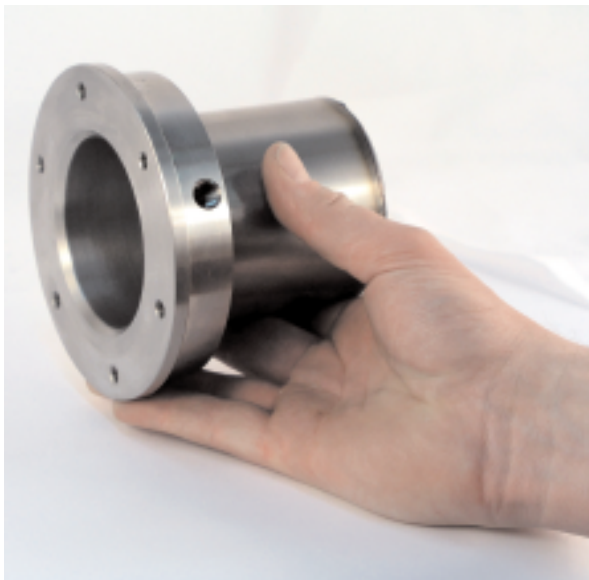
### Temperature Control (Heat) Jacket



### Temperature Control (Heat) Jacket (Clamp-on Design)

**Liquiflo's Temperature Control Jacket** can maintain the pump at either elevated or reduced temperatures. Temperature Control Jackets are commonly used when pumping liquids that solidify or become viscous when the temperature decreases. Either steam or a liquid at elevated temperature can be circulated through the heat jacket to maintain the fluid being pumped at a specified elevated temperature.

### DUAL-KAN®



### Dual-Kan® (Double Wall Containment Can)

Liquiflo's patented **Dual-Kan®** controls the temperature of the back end of a magnetically-driven pump by circulating a heating or cooling fluid through the containment can. This is ideal for applications requiring precise and uniform temperature control. The Dual-Kan® will compensate for increases in temperature due to eddy current losses from the mag-drive coupling.

### DUAL-KAN® (Double Wall Containment Can)

