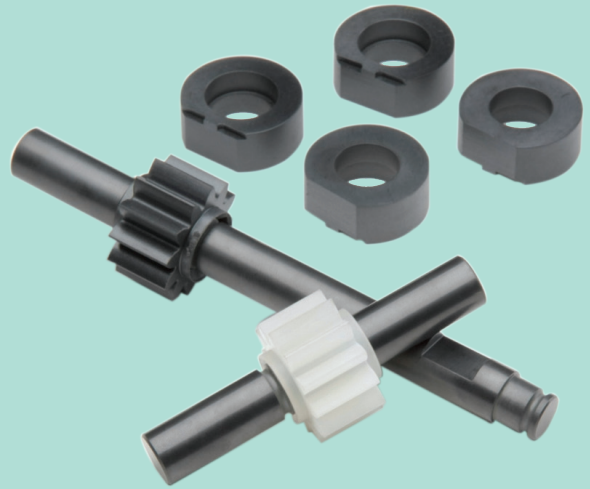


Repair Kits

Available for 3 & H-Series, 2, 4, Poly-Guard,
Max Series Gear Pumps



Rebuild your Gear Pump to Like-New Condition

It is often difficult to assess and measure whether certain components of a pump are beyond re-use. Not replacing worn shafts or bearings can cause other replaced components to fail prematurely. Using a Repair Kit will save time and eliminate guesswork. Encourage your customers to keep a Liquiflo Repair Kit on their shelf for every Liquiflo Pump they purchase.

WHY USE A LIQUIFLO REPAIR KIT?

- Simplify inventory and speed repair.
- Assure that all wear items in the pump will be replaced.
- Encourage replacement of non-reusable items such as o-rings and Retaining Rings.
- Spare repair kit in inventory allows timely rebuild of a pump should a performance problem occur.
- More cost-effective and efficient than purchasing individual parts.

HOW TO ORDER LIQUIFLO REPAIR KITS

Sealed Pump repair kits contain all internal components of the pump. To order a kit, put a "K" in front of the Pump Model Code: **KH5FS6PEEU000000**.

Mag-Drive Pump repair kits contain all internal components of the pump with exception of the inner magnet. To order a kit, put a "K" in front of the Pump Model Code: **KH5FS6PEEU000000US**.





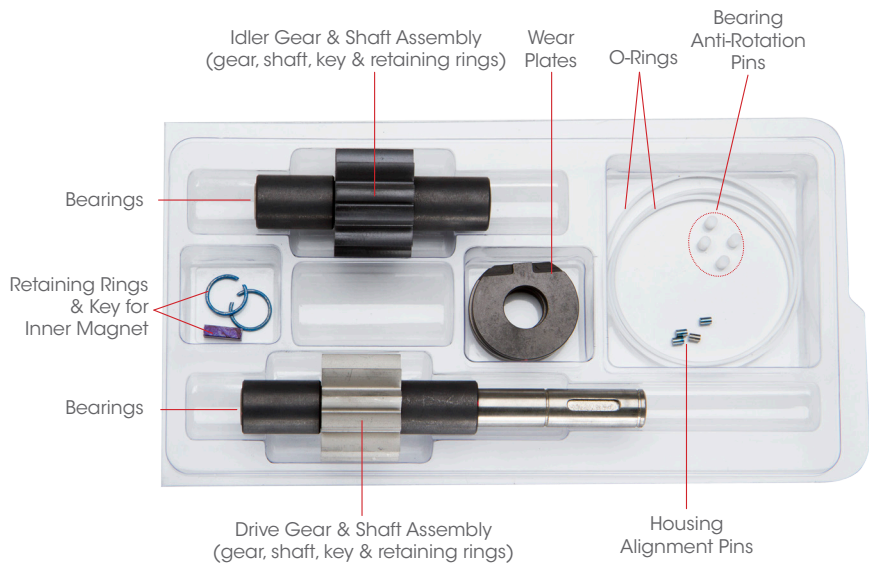
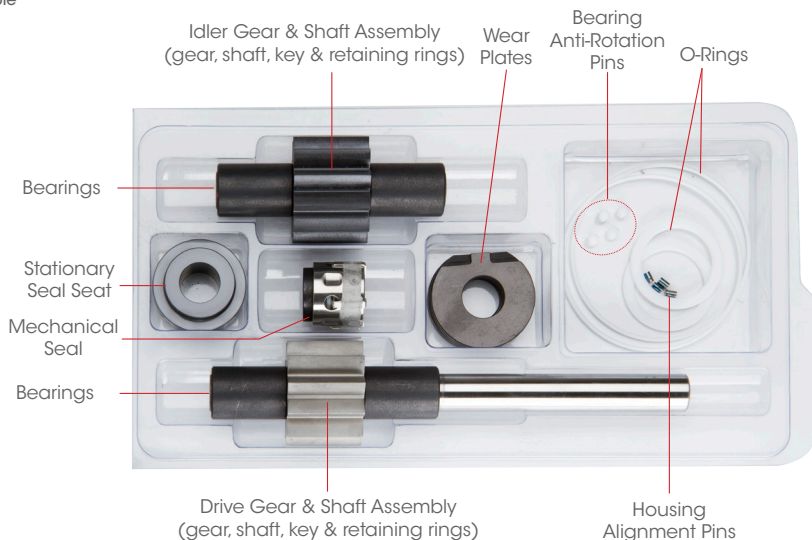
THE CONTENTS OF A REPAIR KIT

Repair Kits are available for all Liquiflo gear pumps. These kits offer the simplest method of rebuilding a pump to like-new condition. Shown below are typical repair kits for H-Series and 3-Series gear pumps.

SEALED PUMP

Repair Kits Include:

- Pins
- Seals
- Drive Gear
- Bearings
- Idler Shaft
- Retaining Rings
- Keys
- O-Rings
- Idler Gear
- Drive Shaft
- Wear Plates



MAG-DRIVE PUMP

Repair Kits Include:

- Pins
- O-Rings
- Idler Gear
- Drive Shaft
- Wear Plates
- Retaining Rings
- Keys
- Drive Gear
- Bearings
- Idler Shaft

OFFICIAL UK DISTRIBUTOR:
Michael Smith Engineers Ltd
www.michael-smith-engineers.co.uk
freephone: 0800 316 7891

Liquiflo®
Chemical Processing Pumps

443 North Avenue Garwood, NJ 07027
908-518-0777 • www.Liquiflo.com