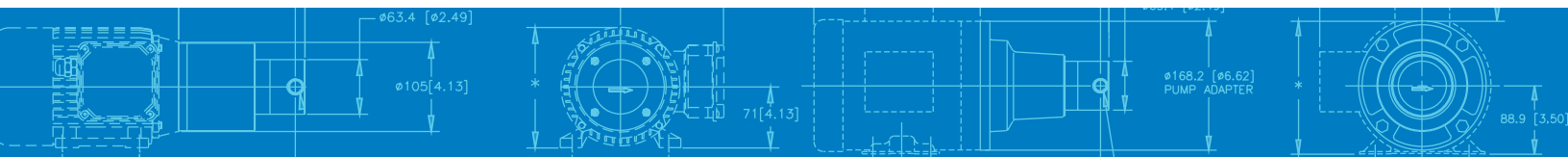




# Series GA/GAH

## MAGNETIC DRIVE GEAR PUMP

When you need a low-flow pump that delivers high-performance in a small package, Series GA is an excellent solution. Series GA pumps provide precise, pulseless flow, and feature Micropump's suction shoe design that allows the pumps to self-compensate for wear ensuring near zero slip and a long pump life. Series GAH extends Series GA to high-system pressure applications making Series GA pumps ideal for a wide-range of low-flow applications.



### SUCTION SHOE STYLE PUMPS

Suction shoe style pumps self-compensate for wear, are excellent for continuous duty processes, and offer improved efficiencies when pumping at higher pressures.

### SMALL SIZE

The miniature package size of the Series GA/GAH is easily incorporated into the design of many systems.

### FLUID PATH INTEGRITY

The magnetic drive and static o-ring seal(s) keep the fluid securely inside the pump and potential contaminants out.

### SMOOTH PULSELESS DELIVERY

Positive displacement, precision gears provide consistent fluid delivery in continuous processes.

### CHEMICALLY RESISTANT

Series GA/GAH has a long life in aggressive environments.

### EASY TO SERVICE

Series GA/GAH pumps are easy to service using a Micropump® service kit and simple hand tools.

### HIGH-SYSTEM PRESSURE CAPABILITY

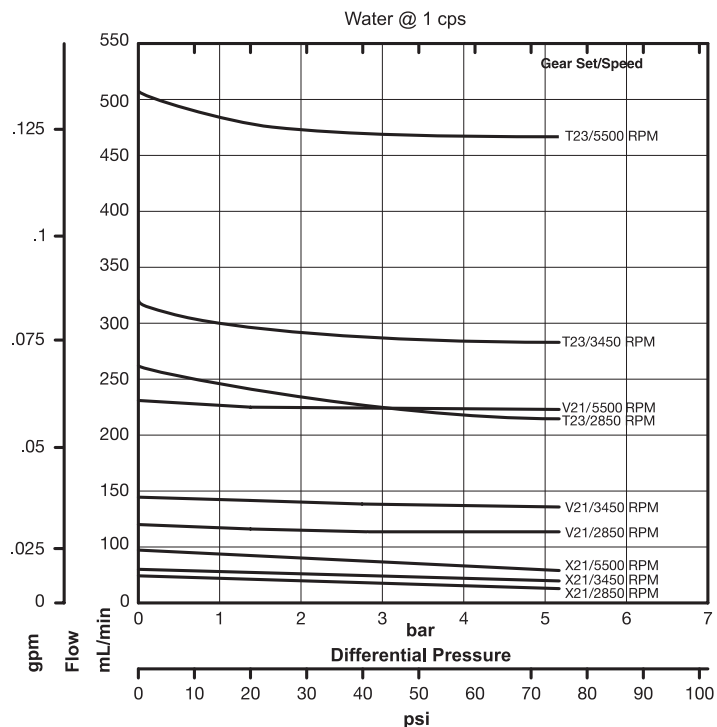
Series GAH pumps are designed to withstand system pressures up to 345 bar (5000 psi).

### WIDE RANGE OF CONFIGURATIONS

Micropump's designs offer a wide range of configurations to meet your more challenging requirements including:

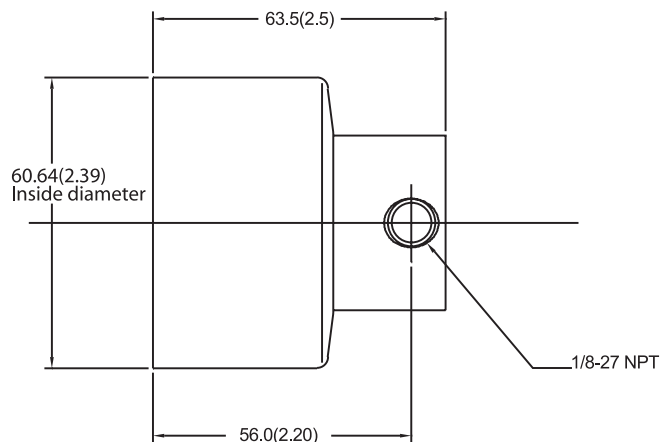
- ▶ Multiple gear, body, and o-ring materials
- ▶ High-torque magnets
- ▶ NEMA, IEC, EagleDrive, and Micropump drive mounts

# PUMP PERFORMANCE



# DIMENSIONS

A MOUNT



Units: mm(in). Nominal dimensions shown.

OFFICIAL UK DISTRIBUTOR: Michael Smith Engineers Limited  
[www.michael-smith-engineers.co.uk](http://www.michael-smith-engineers.co.uk) freephone: 0800 316 7891

**MICROPUMP**

Micropump, Inc | A Unit of IDEX Corp. | 1402 NE 136th Avenue • Vancouver, WA 98684  
 T 800.671.6269 • +1.360.253.2008 | F +1.360.253.8294 | [info.micropump@idexcorp.com](mailto:info.micropump@idexcorp.com) | [www.micropump.com](http://www.micropump.com)

ACTUAL PERFORMANCE MAY VARY. Specifications are subject to change without notice. ©2016 Micropump, Inc., A Unit of IDEX Corporation.  
 Micropump and the Micropump logo are registered trademarks of Micropump, Inc.

REV: 1/16

# PERFORMANCE SUMMARY

## FLOW RATE AT 5500 RPM

- ▶ 506 mL/min (0.134 US gpm)

## DISPLACEMENT

- |                   | X21   | V21   | T23   |
|-------------------|-------|-------|-------|
| ▶ mL/rev          | 0.017 | 0.042 | 0.092 |
| ▶ US gal/1000 rev | 0.045 | 0.01  | 0.02  |

## MAXIMUM RATED DIFFERENTIAL PRESSURE

- ▶ 5.2 Bar (75 psi)

## MAXIMUM RATED SYSTEM PRESSURE

- ▶ Standard Series GA 21 Bar (300 psi)
- ▶ High-Pressure Series GAH 345 Bar (5000 psi)

## TEMPERATURE RANGE

- ▶ -46 to 177 °C (-50 to 350 °F)

## VISCOSITY RANGE

- ▶ 0.5 to 1500 cps

## MAXIMUM RECOMMENDED SPEED

- ▶ 5500 rpm

# PUMP CONSTRUCTION

- ▶ Magnetic drive gear pump
- ▶ Suction shoe style
- ▶ Spur gears
- ▶ Stationary shafts
- ▶ O-ring seal

# WETTED MATERIALS

## BASE MATERIAL

- |                       |               |
|-----------------------|---------------|
| ▶ 316 stainless steel | ▶ Hast C-276® |
| ▶ Titanium            | ▶ Alloy 20    |

## GEARS

- |                   |          |
|-------------------|----------|
| ▶ Carbon Graphite | ▶ PTFE   |
| ▶ PEEK            | ▶ Carbon |
| ▶ PPS             |          |

## STATIC SEALS

- |          |           |
|----------|-----------|
| ▶ Viton® | ▶ PTFE    |
| ▶ TEV    | ▶ Kalrez® |
| ▶ EP     |           |

# MAGNETS

## DRIVEN AND DRIVING

- ▶ Ferrite
- ▶ Rare Earth

# PRODUCT ENHANCEMENTS

- ▶ 1/4 - 18 NPT Side Ports (GA Only)