



GJ SERIES CAVITY STYLE TECHNOLOGY

The GJ Series pumps are the smallest, most compact size and offers the lowest displacement of our cavity style family of pumps.

These magnetically driven gear pumps have provided solutions for customers applications for more than 60 years. Our cavity style gear pumps feature no dynamic seals for applications that cannot tolerate leaks.

MAGNETIC DRIVE GEAR PUMP

SMALL SIZE

The miniature package size of the Series GJ is easily incorporated into the design of many systems.

DISPLACEMENT OPTIONS

The GJ Series offers the most gear set options, so you can choose the displacement necessary for your application.

REVERSE PUMPING CAPABILITY

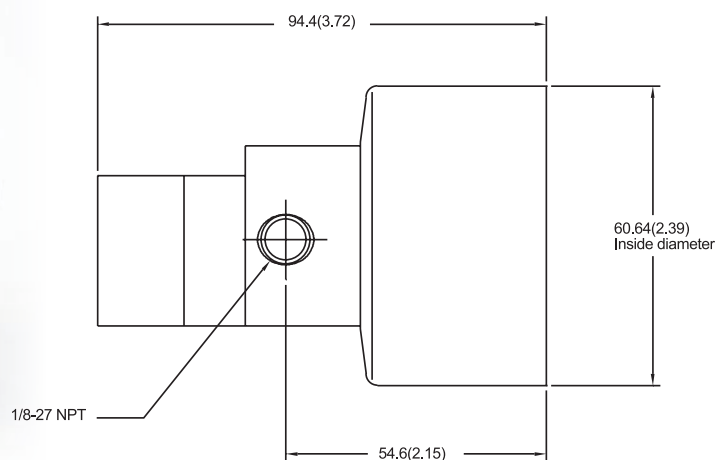
Micropump cavity style gear pumps can be designed for applications with the need for intermittent reverse pumping.

LEAK FREE

Micropump's design utilizes static seals for leak free, contamination free operation.



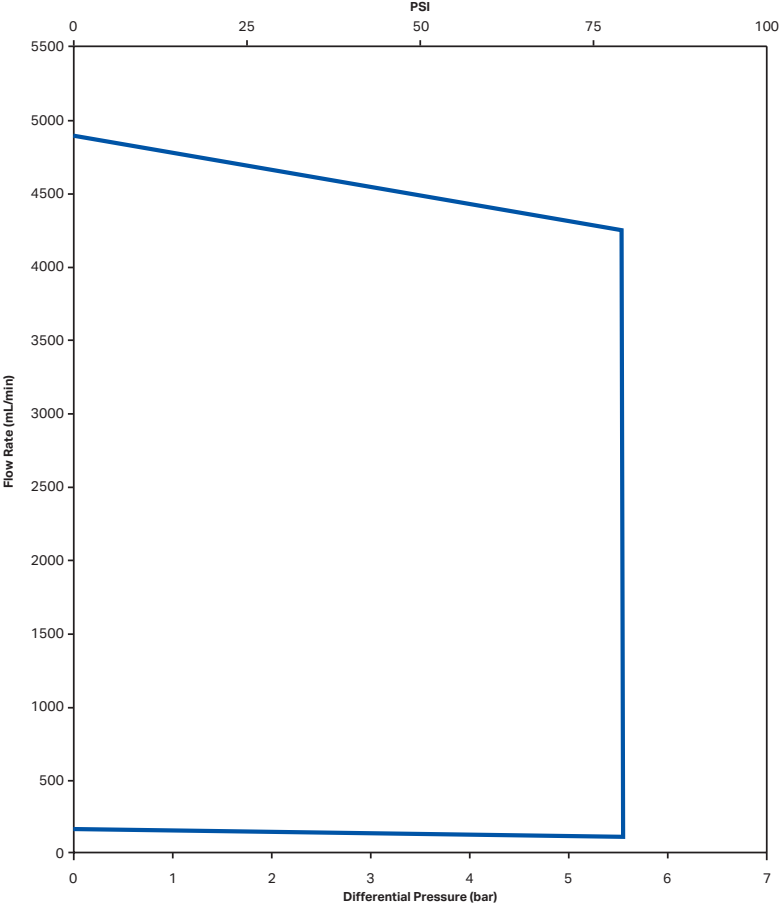
A MOUNT



Units: mm(in). Nominal dimensions shown.

PUMP FLOW RANGE

(Based on Constant Speed Curves at 4,000 RPM)



MAGNETIC GEAR PUMP FEATURES

CAVITY STYLE PUMPS

Cavity style pumps are excellent for wide-ranging inlet and outlet operating conditions. The helical gears allow for a highly quiet and efficient pump for fluid movement.

SMOOTH PULSELESS DELIVERY

Positive displacement, precision gears provide consistent fluid delivery in continuous processes.

EASY TO SERVICE

Our pumps are easy to service using a Micropump® service kit and simple hand tools.

FLUID PATH INTEGRITY

The magnetic drive and static o-ring seal(s) keep the fluid securely inside the pump and potential contaminants out.

CHEMICALLY RESISTANT

Chemically inert materials for harsh environments.

PERFORMANCE SUMMARY

FLOW RATE AT 5500 RPM

- 6.8 L/min (1.8 US gpm)

DISPLACEMENT

Gear Set	N21	N23	N25	N27
mL/rev	0.316	0.64	0.91	1.23
US gal/1000 rev	0.08	0.17	0.24	0.32

MAXIMUM RATED DIFFERENTIAL PRESSURE

- 5.6 Bar (80 psi)

MAXIMUM RATED SYSTEM PRESSURE

- 21 Bar (300 psi)

TEMPERATURE RANGE

- 46 to 121 °C (-50 to 250 °F)

VISCOSITY RANGE

- 0.5 to 1500 cps

MAXIMUM RECOMMENDED SPEED

- 5500 rpm

PUMP CONSTRUCTION

- Cavity style
- Side Port
- Two helical, shafted gears
- Sleeve bushings
- PTFE bevel or o-ring seal

WETTED MATERIALS

BASE MATERIAL

- 316 stainless steel
- Titanium*
- Alloy 20*
- Hastalloy C-276*

GEARS

- PTFE
- PPS*
- PEEK*

STATIC SEALS

- PTFE
- PTFE / Viton*
- Viton*
- PTFE / EP*

MAGNETS

DRIVEN AND DRIVING

- Ferrite
- NdFeB*

PRODUCT ENHANCEMENTS

- Internal Bypass
- 1/4-18 NPT Side Ports

*Denotes customization or materials that may require minimum order quantities.

ACTUAL PERFORMANCE MAY VARY. Specifications are subject to change without notice.



OFFICIAL UK DISTRIBUTOR: Michael Smith Engineers Limited

Web: www.michael-smith-engineers.co.uk | Email: info@michael-smith-engineers.co.uk | Freephone: 0800 316 7891

©Micropump, Inc. | A unit of IDEX