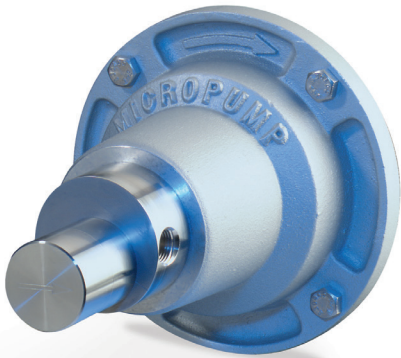
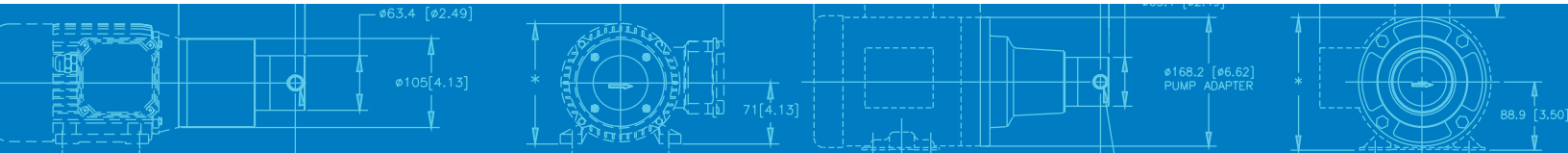


Series GK

MAGNETIC DRIVE GEAR PUMP



Series GK pumps deliver exceptional pumping performance for any high-precision application. These compact magnetically driven gear pumps feature a cavity style design with benefits such as chemical resistance, smooth, pulseless delivery, and high-system pressure capability. Available in standard and OEM configurations, Micropump's Series GK pumps are ideal for a variety of fluid handling applications.



CAVITY STYLE PUMPS

Cavity style pumps are excellent for wide-ranging inlet and outlet operating conditions, and allow for intermittently pumping in reverse.

SMALL SIZE

The miniature package size of the Series GK is easily incorporated into the design of many systems.

FLUID PATH INTEGRITY

The magnetic drive and static o-ring seal(s) keep the fluid securely inside the pump and potential contaminants out.

SMOOTH PULSELESS DELIVERY

Positive displacement, precision gears provide consistent fluid delivery in continuous processes.

CHEMICALLY RESISTANT

Series GK has a long-life in aggressive environments.

EASY TO SERVICE

Series GK pumps are easy to service using a Micropump service kit and simple hand tools.

HIGH-SYSTEM PRESSURE CAPABILITY

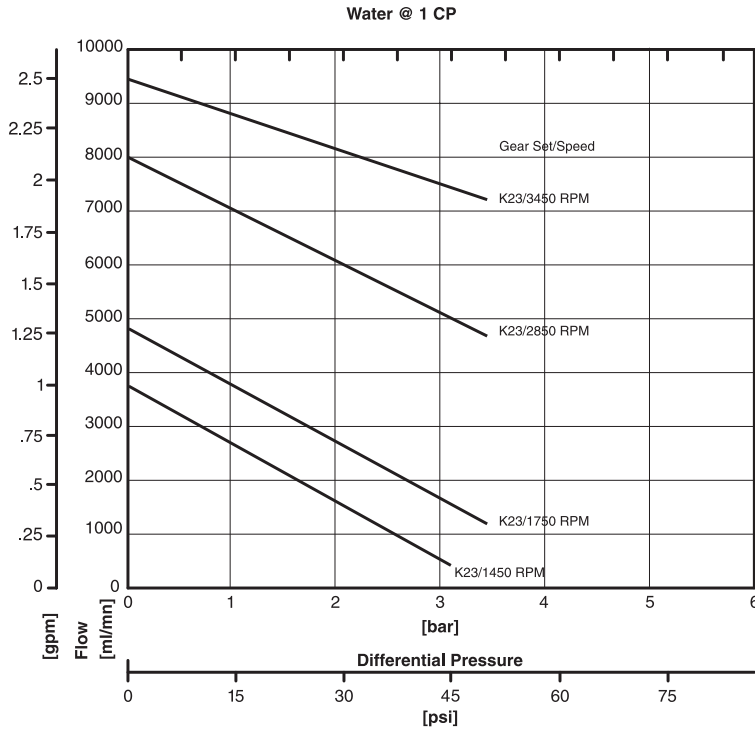
Optional versions of the Series GK are designed to withstand system pressures up to 103 Bar (1500 psi).

WIDE RANGE OF CONFIGURATIONS

Micropump's designs offer a wide range of configurations to meet your more challenging requirements including:

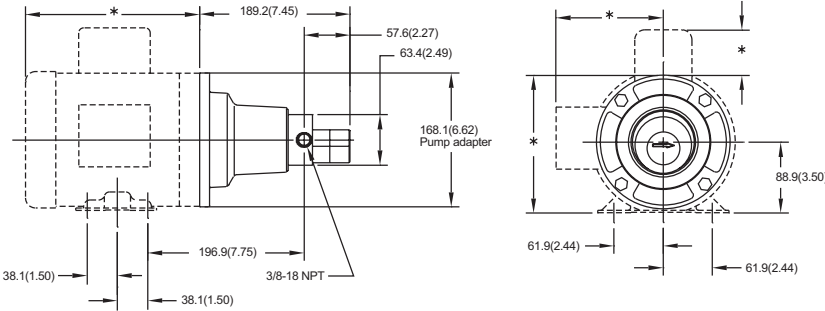
- ▶ Magnetic drive gear pump
- ▶ Two helical, shafted gears
- ▶ Sleeve bushings
- ▶ O-ring seals
- ▶ NEMA, IEC, and Micropump drive mounts

PUMP PERFORMANCE

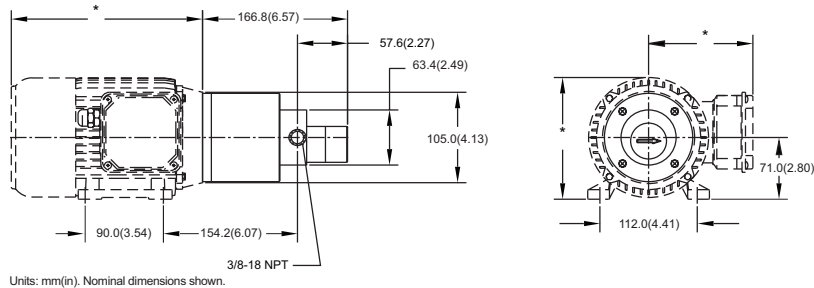


DIMENSIONS

NEMA 56C MOUNT



IEC 71-B14 MOUNT



PERFORMANCE SUMMARY

FLOW RATE AT 4000 RPM

- ▶ 12.6 L/min (3.3 US gpm)

DISPLACEMENT

- ▶ Gear Set K23
- ▶ mL/rev 3.15
- ▶ US gal/1000 rev 0.83

MAXIMUM RATED DIFFERENTIAL PRESSURE

- ▶ 3.4 Bar (50 psi)

MAXIMUM RATED SYSTEM PRESSURE

- ▶ 103 Bar (1500 psi)

TEMPERATURE RANGE

- ▶ -46 to 54 °C (-50 to 130 °F)

VISCOSITY RANGE

- ▶ 0.5 to 1500 cps

MAXIMUM RECOMMENDED SPEED

- ▶ 4000 rpm

PUMP CONSTRUCTION

- ▶ Magnetic drive gear pump
- ▶ Cavity style
- ▶ Two helical, shafted gears
- ▶ Sleeve bushings
- ▶ O-ring seals

WETTED MATERIALS

BASE MATERIALS

- ▶ 316 stainless steel

GEARS

- ▶ PTFE

STATIC SEALS

- ▶ PTFE

MAGNETS

DRIVEN AND DRIVING

- ▶ Ferrite
- ▶ Rare earth

PRODUCT ENHANCEMENTS

- ▶ Carbon Bushings
- ▶ Deck Ports



OFFICIAL UK DISTRIBUTOR: Michael Smith Engineers Limited
www.michael-smith-engineers.co.uk Freephone: 0800 316 7891

Micropump, Inc | A Unit of IDEX Corp. | 1402 NE 136th Avenue • Vancouver, WA 98684

T 800.671.6269 • +1.360.253.2008 | F +1.360.253.8294 | info.micropump@idexcorp.com | www.micropump.com

ACTUAL PERFORMANCE MAY VARY. Specifications are subject to change without notice. ©2016 Micropump, Inc., A Unit of IDEX Corporation. Micropump and the Micropump logo are registered trademarks of Micropump, Inc.

REV. 1/16