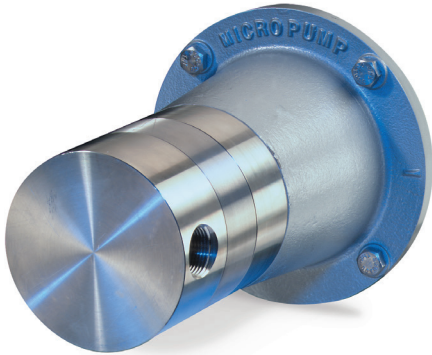
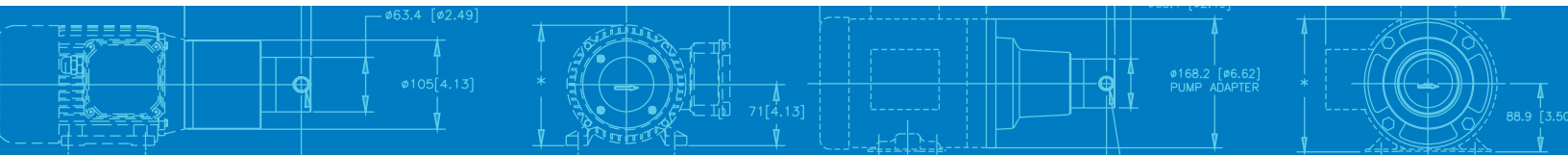


Series GN

MAGNETIC DRIVE GEAR PUMP



Series GN pumps deliver exceptional pumping performance for any high-precision application. These magnetically driven gear pumps feature a cavity style design with benefits such as chemical resistance, smooth pulseless fluid delivery, and high-system pressure capability. Available in standard and OEM configurations, Micropump's Series GN pumps keep your operations running smoothly.



CAVITY STYLE PUMPS

Cavity style pumps are excellent for wide-ranging inlet and outlet operating conditions, and allow for intermittently pumping in reverse.

SMALL SIZE

The miniature package size of the Series GN is easily incorporated into the design of many systems.

FLUID PATH INTEGRITY

The magnetic drive and static o-ring seal(s) keep the fluid securely inside the pump and potential contaminants out.

SMOOTH PULSELESS DELIVERY

Positive displacement, precision gears provide consistent fluid delivery in continuous processes.

CHEMICALLY RESISTANT

Series GN has a long-life in aggressive environments.

EASY TO SERVICE

Series GN pumps are easy to service using a Micropump service kit and simple hand tools.

HIGH SYSTEM PRESSURE CAPABILITY

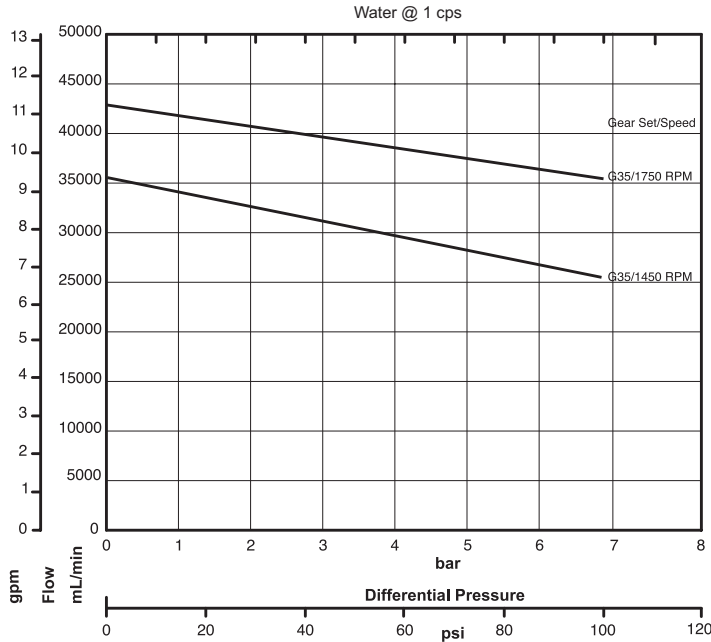
Optional version of the Series GN are designed to withstand system pressures up to 103 Bar (1500 psi).

WIDE RANGE OF CONFIGURATIONS

Micropump's designs offer a wide range of configurations to meet your more challenging requirements including:

- ▶ Multiple gear, body, and o-ring materials
- ▶ High-torque magnets
- ▶ NEMA and IEC drive mounts

PUMP PERFORMANCE



PERFORMANCE SUMMARY

FLOW RATE AT 1750 RPM

- ▶ 42.9 L/min (11.4 US gpm)

DISPLACEMENT

- ▶ Gear Set G35
- ▶ mL/rev 24.5
- ▶ US gal/1000 rev 6.5

MAXIMUM RATED DIFFERENTIAL PRESSURE

- ▶ 6.9 Bar (100 psi)

MAXIMUM RATED SYSTEM PRESSURE

- ▶ 103 Bar (1500 psi)

TEMPERATURE RANGE

- ▶ -46 to 121 °C (-50 to 250 °F)

VISCOSITY RANGE

- ▶ 0.5 to 2500 cps

MAXIMUM RECOMMENDED SPEED

- ▶ 1750 rpm

PUMP CONSTRUCTION

- ▶ Magnetic drive gear pump
- ▶ Cavity style
- ▶ Three helical, shafted gears
- ▶ Stationary shafts
- ▶ O-ring seals

WETTED MATERIALS

BASE MATERIAL

- ▶ 316 stainless steel
- ▶ Alloy 20

GEARS

- ▶ PEEK
- ▶ PTFE

STATIC SEALS

- ▶ Viton®
- ▶ PTFE
- ▶ TEV
- ▶ EP

MAGNETS

DRIVEN AND DRIVING

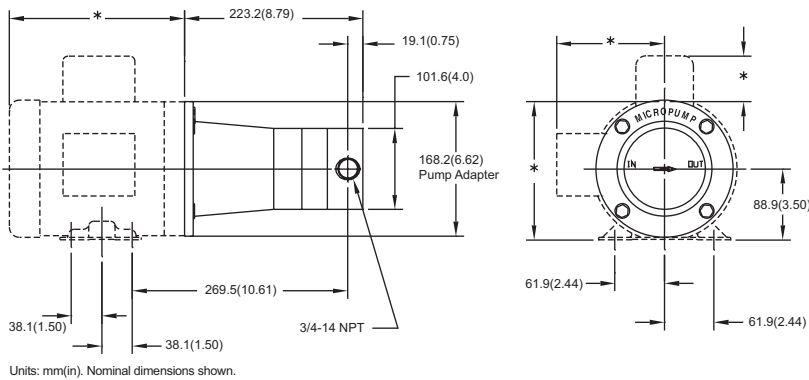
- ▶ Rare earth

PRODUCT ENHANCEMENTS

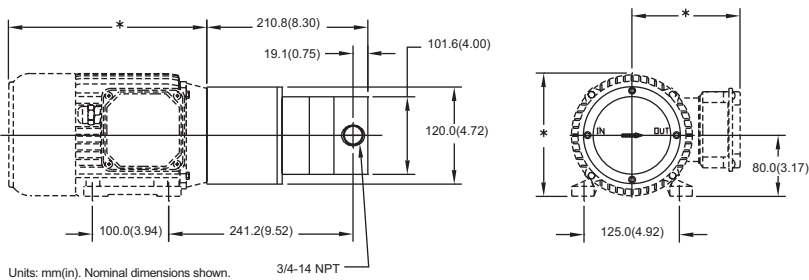
- ▶ High-system pressure
- ▶ Carbon bushings
- ▶ Hardened shafts

DIMENSIONS

NEMA 56C MOUNT



IEC 71-B14 MOUNT



MICROPUMP®

OFFICIAL UK DISTRIBUTOR: Michael Smith Engineers Limited
 www.michael-smith-engineers.co.uk Freephone: 0800 316 7891

Micropump, Inc | A Unit of IDEX Corp. | 1402 NE 136th Avenue • Vancouver, WA 98684

T 800.671.6269 • +1.360.253.2008 | F +1.360.253.8294 | info.micropump@idexcorp.com | www.micropump.com

ACTUAL PERFORMANCE MAY VARY. Specifications are subject to change without notice. ©2016 Micropump, Inc., A Unit of IDEX Corporation. Micropump and the Micropump logo are registered trademarks of Micropump, Inc.

REV: 1/16