



# DRUM/BARREL PUMPS TT SERIES

## Sealed, Medium Viscosity/Flow

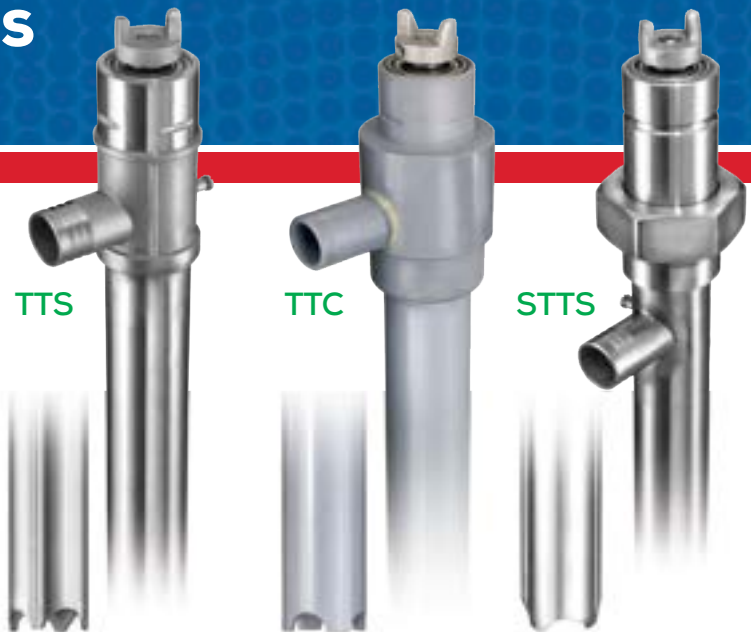
Sealed pump with PTFE screw-type lifting compressors.  
Ideal for liquids containing small particulate or solvents. Model STTS constructed of FDA-compliant materials.

- 316SS or CPVC tubes
- Interchangeable with motors
- Up to 2000 cP with M6X air motor



### Applications:

Inks, paints, solvents<sup>†</sup>, sodium hypochlorite, food products, sanitary



## CONSTRUCTION SPECIFICATIONS

Pump Model	Construction Materials		Tube Dia.	Discharge	Hose Size	Max. Temp.*		Min. Temp.		Tube Lengths
	Outer Tube	Internals	in (cm)	Size & Type	in (cm)	°F	°C	°F	°C	in (cm)
TTS	316 Stainless Steel	316 Stainless Steel, PTFE	1-1/2 (3.8)	1" Hose Barb	1 (2.54)	150	66	-20	-29	27 (69) 40 (102) 48 (122)
TTC	CPVC	Alloy 625, PTFE	1-5/8 (4.1)			150	66	34	1.1	40 (102)
STTS	316 Stainless Steel	316 Stainless Steel, PTFE	1-1/2 (3.8)			150	66	-10	-23	40 (102)

\*When pumping flammables or combustibles, use explosion proof electric or air drive motors on stainless steel tubes with static protection kit.

Note: FDA-compliant materials for some pump models are available. Please contact Finish Thompson for more information.

## PERFORMANCE DATA

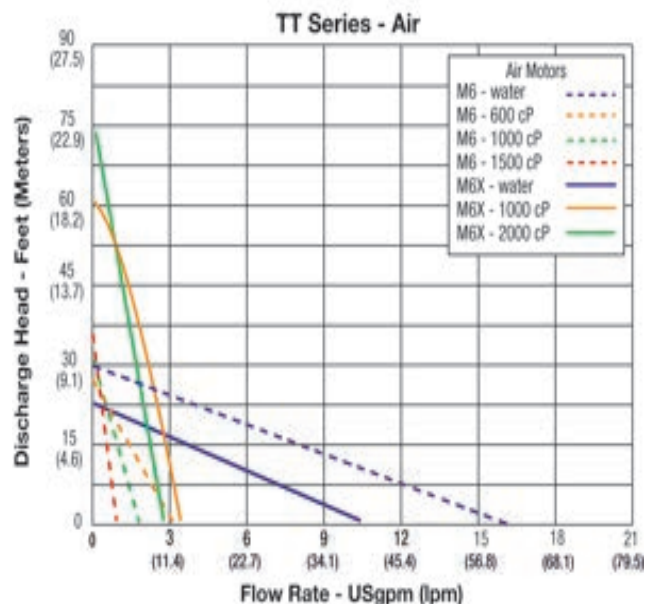
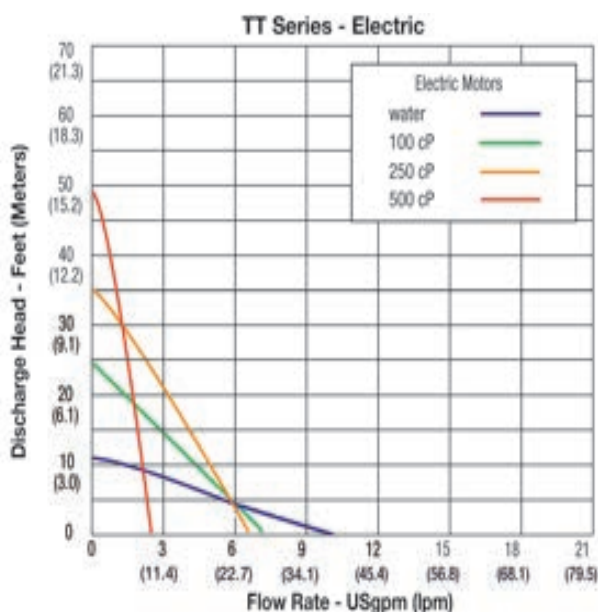
Maximum Flow*		Maximum Head*		Maximum Specific Gravity <sup>†</sup>	Maximum Viscosity	
Elec. gpm (lpm)	Air gpm (lpm)	Elec. ft (m)	Air ft (m)		Electric	Air
10 (38)	16 (61)	10 (3)	30 (9)	1.8	50 cP	2,000 cP

\*All testing performed with water at 68°F (20°C). Actual performance can vary by +/- 10%. Actual performance will decrease with increased fluid viscosity and specific gravity.

## VISCOSITY DATA

Viscosity (cP)	100	200	250	1,000	2,000
Max Flow gpm (lpm)	7 (26)	6 (23)	3 (11)	4 (15)	3 (11)
Max Head feet (meter)	25 (8)	35 (11)	48 (15)	60 (18)	73 (32)

Note: Electric motors: 100-500 cP M6X: 500-2,000 cP



# DRUM/BARREL PUMPS

## MOTOR DATA



TEFC  
(M7TV, M8TV)



Ex-Proof  
(M7XV, M8XV)



Air  
(M6, M6X)

Model	Description	Certification	Electrical Requirements	Input	Output	RPM	Maximum Viscosity cP
				W	W		

### TEFC (Totally Enclosed Fan Cooled), IP55 Motors

M7TV	Continuous duty. 12 ft. (3.5 m) cord with plug, downdraft cooling and quick connection to pump without tools. Variable speed, solid state overload protection, zero voltage release.	QPS	115VAC/60 Hz	450	250	0 - 6,000	50
M8TV		CE	230VAC/50-60 Hz	450	250	0 - 6,000	50

### Explosion Proof Motors

M7XV	Continuous duty, IP55. 12 ft. (3.5 m) cord without plug, downdraft cooling and quick connection to pump without tools. Variable speed, solid state overload protection, zero voltage release.	QPS Class I, Div. 1, Gr D, T4	115VAC/60 Hz	450	250	0 - 6,000	50
M8XV+		CE/ATEX/IEEx EX II 2G Ex db ib IIB T5 Gb	230VAC/50-60 Hz	450	250	0 - 6,000	50

### Air Motors<sup>†</sup>

M6	Lightweight. Operates from customer-supplied compressed air source. Variable speed. Muffler and control valve.	CE	80-100 psi @ 15-32 cfm	-	400	300-9,000	1500
M6X		CE	80-100 psi @ 15-32 cfm	-	600	300-6,000	2000

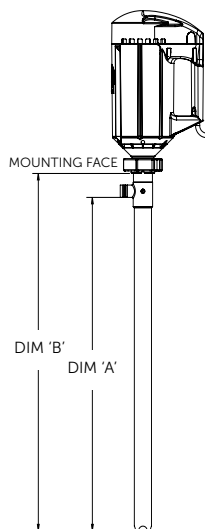
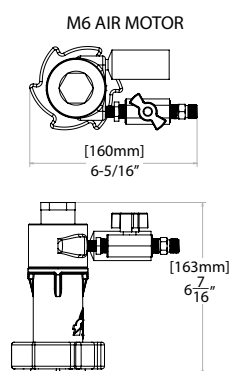
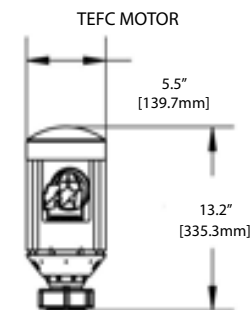
\*An air motor is a non-electrical device meaning possibility of explosion from igniting flammables/combustibles is reduced. Air motor performance will depend upon user's system setup.

†Motor suitable for hazardous areas that do not require independent certification.

\*Above ATEX motors are not for use in North America

## DIMENSIONS

## ACCESSORIES



MODEL	DIM A (in)	DIM B (in)	DIM A (mm)	DIM B (mm)
TTS-27	27-1/16	29	686.9	736.0
TTS/TTC-40	40-1/16	42	1017.1	1066.2
TTS-48	48-1/16	50	1220.3	1269.4
STTS-40	40	44-1/5	1016.0	1130.3

### Nozzles



### Static Protection Kit



### Drum Adapters



### Discharge Hoses



Use the handy online Pump Selector at [www.finishthompson.com](http://www.finishthompson.com) for help choosing a pump.



### FINISH THOMPSON INC. - HEADQUARTERS

921 Greengarden Road | Erie, PA 16501  
800.934.9384 | ph 814.455.4478 | fx 814.455.8518  
email [sales@finishthompson.com](mailto:sales@finishthompson.com)



OFFICIAL UK DISTRIBUTOR: Michael Smith Engineers Limited

Web: [www.michael-smith-engineers.co.uk](http://www.michael-smith-engineers.co.uk) | Email: [info@michael-smith-engineers.co.uk](mailto:info@michael-smith-engineers.co.uk) | Freephone: 0800 316 7891

### FINISH THOMPSON INC. - EUROPE CENTER

Otto-Hahn-Strasse 16 | Maintal, D-63477 Germany  
49 (0)6181-90878-0 | fx 49 (0)6181-90878-18  
email [europecenter@finishthompson.com](mailto:europecenter@finishthompson.com)